

South Carolina Department of Corrections Recidivism Rates of Inmates Released during FY 2015 - FY 2017			
	Year of Release		
	FY 2015	FY 2016	FY 2017
Total Number of Releases	9,354	9,147	9,305
Percentage of Releasees who Returned to SCD C:	Recidivism Rate by Year of Release		
	FY 2015	FY 2016	FY 2017
Within One Year or Less	5.8%	5.5%	5.0%
Within Two Years or Less	15.7%	14.2%	13.8%
Within Three Years or Less	22.3%	21.2%	20.2%
Comparison of 3-Year Recidivism Rates by Inmate Attributes			
Attributes	FY 2015	FY 2016	FY 2017
Overall Rate	22.3%	21.2%	20.2%
Gender			
Males	23.1%	21.9%	21.1%
Females	16.2%	15.7%	13.6%
Type of Release			
Maxout (Expiration of Sentence)	18.6%	17.1%	17.4%
Parole	19.5%	16.8%	19.5%
Probation	31.3%	29.6%	27.0%
Community Supervision	12.9%	12.6%	10.2%
Supervised Reentry	25.1%	27.1%	22.0%
Youthful Offender Act* - Parole	31.9%	33.7%	36.1%
Youthful Offender Act* - Maxout	32.8%	24.7%	17.9%
Youthful Offender Act* - Intensive Supervision Parole	30.3%	30.6%	28.5%
Age at Release			
Under 25 Years	29.1%	31.4%	27.7%
25-30 Years	24.1%	20.7%	20.7%
31-40 Years	19.7%	21.3%	20.2%
Over 40 Years	19.2%	16.2%	15.7%
Program Participation			
Pre-Release	20.4%	19.9%	19.4%
Work Program	16.3%	15.8%	19.1%
Labor Crew	18.0%	17.4%	19.2%
Labor Crew/Work Program	18.0%	17.3%	19.2%
Prison Industry	13.4%	10.9%	11.7%
GED Earned in SCD C Education Program	17.3%	15.8%	15.3%
Sentence Type			
Youthful Offender Act*	30.8%	30.5%	29.4%
Straight-time	21.4%	20.3%	19.3%
Criminal History			
Had Conviction and/or Commitment	25.4%	22.8%	22.9%
Had Commitment	26.7%	23.4%	23.7%
No Known Priors	17.4%	18.6%	16.1%
Mental Health Classification at time of release			
Mentally III	24.4%	24.7%	20.6%
Non-Mentally III	22.1%	20.8%	20.1%

* Youthful Offender Act (YOA) inmates serve an indeterminate sentence of 1 to 6 years. "Intensive Supervision Parole" releases began in FY13; this parole program includes "first time" youthful offenders who undergo intensive programs/oversight while institutionalized and while on parole supervision.

South Carolina Department of Corrections Profile of Inmates in Institutional Count (Including Inmates on Authorized Absence) as of June 30, 2020			
Characteristics	Male Population	Female Population	Total Population
TOTAL Inmates Population	16,169	1,149	17,318
Current Age			
Average Current Age	39.7	38.8	39.7
21 & Under	555 (3%)	22(2%)	577(3%)
22-25	1,244 (8%)	73(6%)	1,317(8%)
26-35	5,165 (32%)	431(38%)	5,596(32%)
36-55	7,109 (44%)	515(45%)	7,624(44%)
56 and Over	2,096 (13%)	108(9%)	2,204(13%)
Average Age at Admission	32.4	34.3	32.6
Race			
Black	9,952(62%)	337(29%)	10,289(59%)
White	5,718(35%)	786(68%)	6,504(38%)
Other	499(3%)	26(2%)	525(3%)
Citizenship			
Aliens	389(2%)	9(1%)	398(2%)
Citizens	15,749(97%)	1,140(99%)	16,889(98%)
Sentencing Data/Criminal History			
Admission Type:			
New	13,327(82%)	1,021(89%)	14,348(83%)
Revocator	2,663(16%)	127(11%)	2,790(16%)
Other	179(1%)	1(0%)	180(1%)
With Current Violent Offense	12,222(76%)	663(58%)	12,885(74%)
With Prior Criminal History	9,363(58%)	405(35%)	9,768(56%)
With Prior Commitments	6,467(40%)	237(21%)	6,704(39%)
Average Sentence Length in Years 1	16.1	11.3	15.8
Average Time to Serve before Maxout 2	6.9	4.8	6.7
Sentences One Year or Less (excl. YOA)	183(1%)	37(3%)	220(1%)
Sentences More than 20 years (excl. lifers)	3,562(22%)	163(14%)	3,725(22%)
With Life Sentence	1,957(12%)	72(6%)	2,029(12%)
With YOA/Juvenile Sentence	359(2%)	19(2%)	378(2%)
On Death Row	37(0%)	0(0%)	37(0%)
Non-Parolable (includes TIS inmates)	10,493(65%)	576(50%)	11,069(64%)
TIS Sentences	10,220(63%)	574(50%)	10,794(62%)
Special Needs			
With Children 3	10,739(66%)	921(80%)	11,660(67%)
With Convicted Disciplinaries in Last 12 Months	5,305(33%)	318(28%)	5,623(32%)
With Victim Witness Indicator	11,304(70%)	640(56%)	11,944(69%)
Sex Registry	2,956(18%)	37(3%)	2,993(17%)
Required DNA Testing	16,006(99%)	1,106(96%)	17,112(99%)
Chemical Dependent per SASSI/TCUDDS 4	4,768(29%)	603(52%)	5,371(31%)
Education/Work			
Average Education Level at Intake	10.6	11.2	10.6
Without HS/GED	7,976(49%)	436(38%)	8,412(49%)
Leading Most Serious Offense 5			
Homicide	24%	Homicide	25%
Dang. Drugs	15%	Dang. Drugs	23%
Robbery	12%	Robbery	7%
Burglary	12%	Assault	6%
Sexual Assault	10%	Burglary	6%
		Assault	9%
Top Five Committing Counties			
Greenville	10%	Greenville	13%
Spartanburg	9%	Spartanburg	12%
Charleston	7%	Horry	8%
Richland	7%	York	6%
Horry	6%	Richland	5%
Mental Health Classification			
No Mental Health Problem	12,191(75%)	343(30%)	12,534(72%)
Developmentally Disabled	9(0%)	1(0%)	10(0%)
Mentally III	3,906(24%)	797(69%)	4,703(27%)
Classification Pending	63(0%)	8(1%)	71(0%)

¹ Excludes Lifers, Death-Row & YOAs

² Include inmates to be released to Community Supervision under Truth-in-Sentencing, excludes Lifers, Death-Row and YOAs

³ Based on inmate self-reported information at intake

⁴ Substance Abuse Subtle Screening Inventory (SASSI) stopped being used in January 1997. Currently Texas Christian University Drug Dependency Screen (TCUDDS) is used.

⁵ To facilitate statistical reporting, SCDC determines a single "most serious offense" (MSO) for each inmate. Before August 2005, the offense with the longest sentence determined MSO. Effective August 2005, inmates' MSO is the offense with the highest severity level (i.e. offenses are classified between severity level 1 and 5, with 5 as the most severe). In cases where an inmate has multiple offenses at the same severity level, SCDC considers the category of each offense, where homicide offenses take precedence, followed by sex offenses and violent offenses. If multiple offenses exist within the same category, the offense with the longest sentence then determines MSO. Because of this definitional change, post-2005 MSO data cannot be compared to pre-2005 MSO data.

NOTE: Percentages may not add up due to rounding.

THE SOUTH CAROLINA DEPARTMENT OF CORRECTIONS

BRYAN P. STIRLING
DIRECTOR



**SCDC
FAQs**

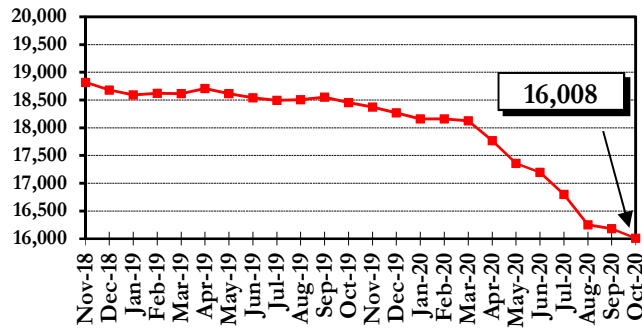
NOVEMBER 2020

For further information, contact:
South Carolina Department of Corrections
Resource and Information Management
4444 Broad River Road
Columbia, SC 29210
(803) 896-8526

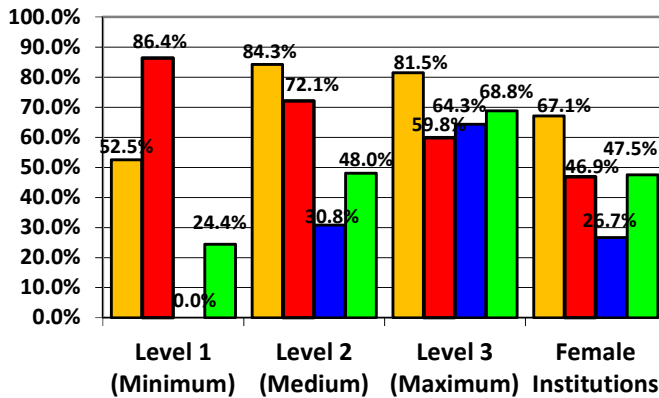
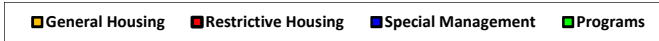
This document is available in alternative formats by contacting the number above.

This report contains preliminary statistics.
Changes/updates will be posted on the SCDC website
www.doc.sc.gov.

SCDC Average Daily Facility Count per Month November 2018 – October 2020



Bedspace Utilization Rates by Housing Type October 15, 2020



Fiscal Year	SCDC Facilities	Other ¹	SCDC Jurisdiction	Change over Last Year	% Change over Last Year
2012	22,711	623	23,334	-605	-2.5%
2013	22,088	592	22,680	-654	-2.8%
2014	21,712	603	22,315	-365	-1.6%
2015	21,183	590	21,773	-542	-2.4%
2016	20,671	623	21,294	-479	-2.2%
2017	20,483	652	21,135	-159	-0.7%
2018	19,559	686	20,245	-890	-4.2%
2019	18,743	673	19,416	-829	-4.1%
2020	18,171	664	18,835	-581	-3.0%

Admissions to SCDC Fiscal Years 2018 – 2020

ADMISSIONS	FY 2018		FY 2019		FY 2020	
	#	%	#	%	#	%
NEW ADMISSIONS FROM COURT	6,187	81.7%	6,051	82.2%	4,834	82.1%
Indeterminate Sentence (YOA)*	530	7.0%	489	6.6%	342	5.8%
Straight Sentence (Non-YOA)	5,619	74.2%	5,522	75.0%	4,458	75.7%
Other Jurisdiction	38	0.5%	40	0.5%	34	0.6%
PROBATION REVOCATIONS***	837	11.0%	751	10.2%	545	9.3%
PAROLE REVOCATIONS	283	3.7%	310	4.2%	247	4.2%
Youthful Offender Act (YOA)	57	0.8%	72	1.0%	25	0.4%
NON-YOA	226	3.0%	238	3.2%	222	3.8%
ISS REVOCATIONS	145	1.9%	127	1.7%	171	2.9%
SUPERVISED RE-ENTRY REVOCATIONS	43	0.6%	40	0.5%	14	0.2%
SF/EPA REVOCATIONS	0	0.0%	0	0.0%	0	0.0%
COMMUNITY SUPV. REVOCATIONS	71	0.9%	69	0.9%	71	1.2%
RE-SENTENCED	11	0.1%	12	0.2%	9	0.2%
DEATH ROW	0	0.0%	2	0.0%	0	0.0%
OTHER **	0	0.0%	1	0.0%	0	0.0%
TOTAL ADMISSIONS	7,577	100.0%	7,363	100.0%	5,891	100.0%

All percentages rounded where possible.
 *The Youthful Offender Act provides for indeterminate sentences of 1-6 years for offenders aged 17-25.
 ** These inmates include appeal bond denied, ICC, and other state inmates.
 *** Death Row admissions figures represent placements to death row, includes new admissions, resentenced and returned inmates.
 **** Includes only those inmates released to probation from SCDC.

Most Serious Offense of SCDC Admissions Fiscal Years 2018 - 2020

OFFENSE CLASSIFICATION	FY 2018	FY 2019	FY 2020
DANGEROUS DRUGS	22.9%	24.5%	25.1%
BURGLARY	14.6%	13.1%	12.6%
ASSAULT	8.9%	8.7%	7.6%
FAMILY OFFENSE	7.6%	8.5%	9.2%
LARCENY	7.8%	7.6%	7.8%
ROBBERY	5.8%	5.8%	5.1%
TRAFFIC OFFENSE	4.8%	4.5%	4.4%
ALL OTHERS	27.6%	27.3%	28.2%
TOTAL ADMISSIONS	7,577	7,363	5,891

Average Sentence Length of SCDC Admissions Fiscal Years 2018 - 2020

	FY 2018	FY 2019	FY 2020
Average Sentence Length	4 Yrs. 10 Mos.	4 Yrs. 8 Mos.	4 Yrs. 8 Mos.

* This average does not include inmates with life, death, YOA sentences and inmates released on paid fine, remanded appeal, court order, pardon, resentenced, or death.

Time Served by SCDC Inmates Released Fiscal Years 2018 – 2020

TIME SERVED	FY 2018		FY 2019		FY 2020	
	#	%	#	%	#	%
3 Months or Less	501	5.8%	316	4.2%	300	4.0%
3 Months 1 Day-6 Months	882	10.3%	686	9.1%	733	9.8%
6 Months 1 Day-9 Months	941	11.0%	890	11.8%	924	12.4%
9 Months 1 Day-1 Year	777	9.1%	804	10.7%	831	11.2%
1 Year 1 Day-5 Years	4,214	49.1%	3,740	49.7%	3,573	48.0%
5 Years 1 Day-10 Years	737	8.6%	601	8.0%	588	7.9%
10 Years 1 Day-15 Years	254	3.0%	256	3.4%	252	3.4%
15 Years 1 Day-20 Years	135	1.6%	121	1.6%	125	1.7%
20 Years 1 Day-25 Years	63	0.7%	53	0.7%	60	0.8%
25 Years 1 Day-30 Years	27	0.3%	22	0.3%	24	0.3%
Over 30 Years	54	0.6%	30	0.4%	35	0.5%
TOTAL RELEASES	8,585	100.0%	7,519	100.0%	7,445	100.0%
Average Time Served	2 Years 8 Months		2 Years 9 Months		2 Years 8 Months	

This average does not include inmates with life, death, YOA sentences and inmates released on paid fine, remanded appeal, court order, pardon, resentenced, or death.

Releases from SCDC by Type Fiscal Years 2018 – 2020

RELEASES	FY 2018		FY 2019		FY 2020	
	#	%	#	%	#	%
EXPIRATION OF SENTENCE/ LESS GOOD TIME	3,067	31.3%	2,518	33.5%	2,778	37.3%
MAXOUT - YOA	64	0.8%	83	1.1%	83	1.1%
PLACED ON PROBATION	1,659	20.6%	1,469	19.5%	1,416	19.0%
PAROLED TO INTENSIVE SUPERVISION SERVICES*	492	6.1%	513	6.8%	455	6.1%
PAROLED BY YOA PAROLE BOARD**	193	2.4%	135	1.8%	133	1.8%
PAROLED BY DPPPS***	1,219	15.2%	1,196	15.9%	931	12.5%
RE-SENTENCED	7	0.1%	5	0.1%	0	0.0%
COMMUNITY SUPERVISION	957	11.9%	871	11.6%	900	12.1%
SUPERVISED RE-ENTRY	782	9.7%	621	8.3%	636	8.5%
DEATH	114	1.4%	79	1.1%	82	1.1%
DEATH-EXECUTED	0	0.0%	0	0.0%	0	0.0%
RELEASED TO EPA	0	0.0%	0	0.0%	0	0.0%
OTHER ****	31	0.4%	29	0.4%	31	0.4%
TOTAL RELEASES	8,036	100.0%	7,519	100.0%	7,445	100.0%

* Intensive Supervision Administrative Release Authority (ISARA) assumed YOA Parole Board duties on February 1, 2013
 ** The Youthful Offender Act provides for indeterminate sentences of 1 - 6 years for offenders aged 17 - 25.
 *** Department of Probation, Parole, and Pardon Services.
 **** These releases include court ordered, paid fine, appeal bond, pardon, remanded to county and released on furlough.

South Carolina Department of Corrections Cost Per Inmate* Fiscal Years 2016-2020

Fiscal Year	Based on State Funds Spent		Based on All Funds Spent***	
	Annual Cost Per Inmate	Daily Cost Per Inmate	Annual Cost Per Inmate	Daily Cost Per Inmate
2016	\$18,119	\$49.50	\$19,935	\$54.47
2017	\$19,054	\$52.20	\$20,925	\$57.33
2018	\$21,756	\$59.61	\$23,712	\$64.96
2019	\$23,673	\$64.86	\$25,836	\$70.78
2020	\$24,510	\$66.97	\$26,627	\$72.75