

South Carolina Department of Corrections Recidivism Rates of Inmates Released during FY 2014 - FY 2016			
	Year of Release		
	FY 2014	FY 2015	FY 2016
<b>Total Number of Releases</b>	<b>9,485</b>	<b>9,354</b>	<b>9,147</b>
<b>Percentage of Releases who Returned to SCDC:</b>	<b>Recidivism Rate by Year of Release</b>		
	<b>FY 2014</b>	<b>FY 2015</b>	<b>FY 2016</b>
Within One Year or Less	5.6%	5.8%	5.5%
Within Two Years or Less	15.2%	15.7%	14.2%
Within Three Years or Less	22.7%	22.3%	21.2%
<b>Comparison of 3-Year Recidivism Rates by Inmate Attributes</b>			
<b>Attributes</b>	<b>FY 2014</b>	<b>FY 2015</b>	<b>FY 2016</b>
Overall Rate	22.7%	22.3%	21.2%
<b>Gender</b>			
Males	23.7%	23.1%	21.9%
Females	14.8%	16.2%	15.7%
<b>Type of Release</b>			
Maxout (Expiration of Sentence)	18.7%	18.6%	17.1%
Parole	19.0%	19.5%	16.8%
Probation	34.3%	31.3%	29.6%
Community Supervision	12.0%	12.9%	12.6%
Supervised Reentry	27.9%	25.1%	27.1%
Youthful Offender Act* - Parole	30.9%	31.9%	33.7%
Youthful Offender Act* - Maxout	25.0%	32.8%	24.7%
Youthful Offender Act* - Intensive Supervision Parole	28.9%	30.3%	30.6%
<b>Age at Release</b>			
Under 25 Years	28.5%	29.1%	31.4%
25-30 Years	23.4%	24.1%	20.7%
31-40 Years	21.9%	19.7%	21.3%
Over 40 Years	19.1%	19.2%	16.2%
<b>Program Participation</b>			
Pre-Release	20.8%	20.4%	19.9%
Work Program	22.6%	16.3%	15.8%
Labor Crew	21.9%	18.0%	17.4%
Labor Crew/Work Program	21.8%	18.0%	17.3%
Prison Industry	12.5%	13.4%	10.9%
GED Earned in SCDCC Education Program	21.3%	17.3%	15.8%
<b>Sentence Type</b>			
Youthful Offender Act*	29.7%	30.8%	30.5%
Straight-time	21.9%	21.4%	20.3%
<b>Criminal History</b>			
Had Conviction and/or Commitment	25.6%	25.4%	22.8%
Had Commitment	26.8%	26.7%	23.4%
No Known Priors	18.0%	17.4%	18.6%
<b>Mental Health Classification at time of release</b>			
Mentally Ill	25.8%	24.4%	24.7%
Non-Mentally Ill	22.3%	22.1%	20.8%

\* Youthful Offender Act (YOA) inmates serve an indeterminate sentence of 1 to 6 years. "Intensive Supervision Parole" releases began in FY13; this parole program includes "first time" youthful offenders who undergo intensive programs/oversight while institutionalized and while on parole supervision.

South Carolina Department of Corrections Profile of Inmates in Institutional Count (Including Inmates on Authorized Absence) as of June 30, 2019			
Characteristics	Male Population	Female Population	Total Population
<b>TOTAL Inmates Population</b>	<b>17,478</b>	<b>1,370</b>	<b>18,848</b>
<b>Current Age</b>			
Average Current Age	39.0	37.9	39.0
21 & Under	745 (4%)	33 (2%)	778 (4%)
22-25	1,468 (8%)	119 (9%)	1,587 (8%)
26-35	5,639 (32%)	507 (37%)	6,146 (33%)
36-55	7,570 (43%)	611 (45%)	8,181 (43%)
56 and Over	2,056 (12%)	100 (7%)	2,156 (11%)
Average Age at Admission	32.4	34.0	32.5
<b>Race</b>			
Black	10,754 (62%)	365 (27%)	11,119 (59%)
White	6,193 (35%)	973 (71%)	7,166 (38%)
Other	531 (3%)	32 (2%)	563 (3%)
<b>Citizenship</b>			
Aliens	416 (2%)	17 (1%)	433 (2%)
Citizens	17,061 (98%)	1,351 (99%)	18,412 (98%)
<b>Sentencing Data/Criminal History</b>			
<b>Admission Type:</b>			
New	14,280 (82%)	1,204 (88%)	15,484 (82%)
Revocator	3,032 (17%)	165 (12%)	3,197 (17%)
Other	166 (1%)	1 (0%)	167 (1%)
With Current Violent Offense	12,639 (72%)	690 (50%)	13,329 (71%)
With Prior Criminal History	10,268 (59%)	517 (38%)	10,785 (57%)
With Prior Commitments	7,348 (42%)	323 (24%)	7,671 (41%)
Average Sentence Length in Years 1	15.3	9.8	14.8
Average Time to Serve before Maxout 2	6.6	4.2	6.5
Sentences One Year or Less (excl. YOAs)	327 (2%)	91 (7%)	418 (2%)
Sentences More than 20 years (excl. lifers)	3,531 (20%)	157 (11%)	3,688 (20%)
With Life Sentence	1,997 (11%)	72 (5%)	2,069 (11%)
With YOAs/Juvenile Sentence	503 (3%)	36 (3%)	539 (3%)
On Death Row	38 (0%)	0 (0%)	38 (0%)
Non-Parolable (includes TIS inmates)	10,636 (61%)	579 (42%)	11,215 (60%)
TIS Sentences	10,363 (59%)	574 (42%)	10,937 (58%)
<b>Special Needs</b>			
With Children 3	11,610 (66%)	1,055 (77%)	12,665 (67%)
With Convicted Disciplinaries in Last 12 Months	5,900 (34%)	376 (27%)	6,276 (33%)
With Victim Witness Indicator	12,267 (70%)	731 (53%)	12,998 (69%)
Sex Registry	3,078 (18%)	42 (3%)	3,120 (17%)
Required DNA Testing	17,217 (99%)	1,282 (94%)	18,499 (98%)
Chemical Dependent per SASSI/TCUDDS 4	5,398 (31%)	675 (49%)	6,073 (32%)
<b>Education/Work</b>			
Average Education Level at Intake	10.6	11.0	10.6
Without HS/GED	8,649 (49%)	575 (42%)	9,224 (49%)
<b>Leading Most Serious Offense 5</b>			
Homicide	22%	Dang. Drugs	25%
Dang. Drugs	16%	Homicide	20%
Burglary	13%	Burglary	7%
Robbery	13%	Robbery	7%
Sexual Assault	9%	Larceny	7%
		Sexual Assault	9%
<b>Top Five Committing Counties</b>			
Greenville	10%	Greenville	12%
Spartanburg	9%	Spartanburg	12%
Richland	8%	Horry	8%
Charleston	8%	York	6%
Horry	6%	Lexington	4%
<b>Mental Health Classification</b>			
No Mental Health Problem	13,504 (77%)	554 (40%)	14,058 (75%)
Developmentally Disabled	14 (0%)	3 (0%)	17 (0%)
Mentally Ill	3,775 (22%)	788 (58%)	4,563 (24%)
Not Available/Unknown	185 (1%)	25 (2%)	210 (1%)

<sup>1</sup> Excludes Lifers, Death-Row & YOAs

<sup>2</sup> Include inmates to be released to Community Supervision under Truth-in-Sentencing, excludes Lifers, Death-Row and YOAs

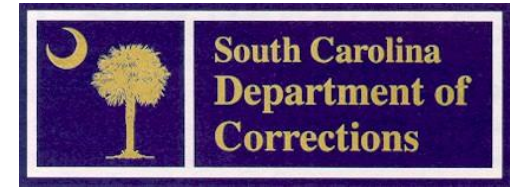
<sup>3</sup> Based on inmate self-reported information at intake

<sup>4</sup> Substance Abuse Subtle Screening Inventory (SASSI) stopped being used in January 1997. Currently Texas Christian University Drug Dependency Screen (TCUDDS) is used.

<sup>5</sup> To facilitate statistical reporting, SCDCC determines a single "most serious offense" (MSO) for each inmate. Before August 2005, the offense with the longest sentence determined MSO. Effective August 2005, inmates' MSO is the offense with the highest severity level (i.e. offenses are classified between severity level 1 and 5, with 5 as the most severe). In cases where an inmate has multiple offenses at the same severity level, SCDCC considers the category of each offense, where homicide offenses take precedence, followed by sex offenses and violent offenses. If multiple offenses exist within the same category, the offense with the longest sentence then determines MSO. Because of this definitional change, post-2005 MSO data cannot be compared to pre-2005 NOTE: Percentages may not add up due to rounding.

# THE SOUTH CAROLINA DEPARTMENT OF CORRECTIONS

**BRYAN P. STIRLING**  
DIRECTOR



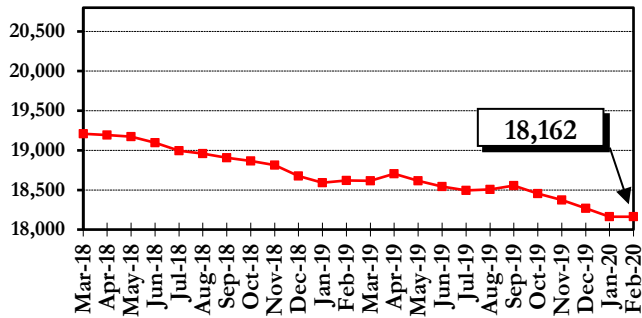
**SCDC  
FAQs  
MARCH 2020**

**For further information, contact:**  
South Carolina Department of Corrections  
Resource and Information Management  
4444 Broad River Road  
Columbia, SC 29210  
(803) 896-8526

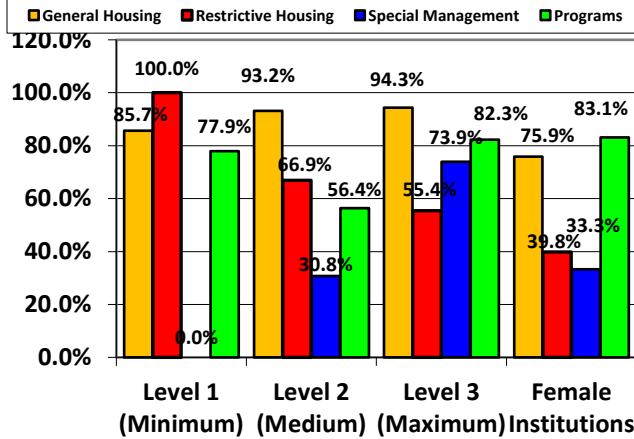
This document is available in alternative formats by contacting the number above.

This report contains preliminary statistics.  
Changes/updates will be posted on the SCDCC website  
[www.doc.sc.gov](http://www.doc.sc.gov)

### SCDC Average Daily Facility Count per Month March 2018 – February 2020



### Bedspace Utilization Rates by Housing Type February 15, 2020



Fiscal Year	SCDC Facilities	Other <sup>1</sup>	SCDC Jurisdiction	Change over Last Year	% Change over Last Year
2011	23,293	646	23,939	-771	-3.1%
2012	22,711	623	23,334	-605	-2.5%
2013	22,088	592	22,680	-654	-2.8%
2014	21,712	603	22,315	-365	-1.6%
2015	21,183	590	21,773	-542	-2.4%
2016	20,671	623	21,294	-479	-2.2%
2017	20,483	652	21,135	-159	-0.7%
2018	19,559	686	20,245	-890	-4.2%
2019	18,743	673	19,416	-829	-4.1%

### Admissions to SCDC Fiscal Years 2017 – 2019

ADMISSIONS	FY 2017		FY 2018		FY 2019	
	#	%	#	%	#	%
<b>NEW ADMISSIONS FROM COURT</b>	<b>6,999</b>	<b>80.8%</b>	<b>6,187</b>	<b>81.7%</b>	<b>6,051</b>	<b>82.2%</b>
Indeterminate Sentence (YOA)*	630	6.6%	530	7.0%	489	6.6%
Straight Sentence (Non-YOA)	6,317	73.8%	5,619	74.2%	5,522	75.0%
Other Jurisdiction	52	0.4%	38	0.5%	40	0.5%
<b>PROBATION REVOCATIONS***</b>	<b>854</b>	<b>12.4%</b>	<b>837</b>	<b>11.0%</b>	<b>751</b>	<b>10.2%</b>
<b>PAROLE REVOCATIONS</b>	<b>221</b>	<b>3.3%</b>	<b>283</b>	<b>3.8%</b>	<b>310</b>	<b>4.2%</b>
Youthful Offender Act (YOA)	64	1.4%	57	0.8%	72	1.0%
NON-YOA	157	1.9%	226	3.0%	238	3.2%
<b>ISS REVOCATIONS</b>	<b>127</b>	<b>1.8%</b>	<b>145</b>	<b>1.9%</b>	<b>127</b>	<b>1.7%</b>
<b>SUPERVISED RE-ENTRY REVOCATIONS</b>	<b>43</b>	<b>0.4%</b>	<b>43</b>	<b>0.6%</b>	<b>40</b>	<b>0.5%</b>
SF/EPA REVOCATIONS	0	0.0%	0	0.0%	0	0.0%
<b>COMMUNITY SUPV. REVOCATIONS</b>	<b>104</b>	<b>1.3%</b>	<b>71</b>	<b>0.9%</b>	<b>69</b>	<b>0.9%</b>
RE-SENTENCED	8	0.1%	11	0.1%	12	0.2%
DEATH ROW	0	0.0%	0	0.0%	2	0.0%
OTHER **	1	0.0%	0	0.0%	1	0.0%
<b>TOTAL ADMISSIONS</b>	<b>8,357</b>	<b>100.0%</b>	<b>7,577</b>	<b>100.0%</b>	<b>7,363</b>	<b>100.0%</b>

All percentages rounded where possible.  
 \*The Youthful Offender Act provides for indeterminate sentences of 1-6 years for offenders aged 17-25.  
 \*\* These inmates include appeal bond denied, ICC, and other state inmates.  
 \*\*\* Death Row admissions figures represent placements to death row, includes new admissions, resentenced and returned inmates.  
 \*\*\*\* Includes only those inmates released to probation from SCDC.

### Most Serious Offense of SCDC Admissions Fiscal Years 2017 - 2019

OFFENSE CLASSIFICATION	FY 2017	FY 2018	FY 2019
DANGEROUS DRUGS	21.5%	22.9%	24.5%
BURGLARY	13.8%	14.6%	13.1%
ASSAULT	8.0%	8.9%	8.7%
FAMILY OFFENSE	7.1%	7.6%	8.5%
LARCENY	9.0%	7.8%	7.6%
ROBBERY	6.3%	5.8%	5.8%
TRAFFIC OFFENSE	6.0%	4.8%	4.5%
ALL OTHERS	28.3%	27.6%	27.3%
<b>TOTAL ADMISSIONS</b>	<b>8,357</b>	<b>7,577</b>	<b>7,363</b>

### Average Sentence Length of SCDC Admissions Fiscal Years 2017 - 2019

	FY 2017	FY 2018	FY 2019
<b>Average Sentence Length</b>	<b>4 Yrs. 6 Mos.</b>	<b>4 Yrs. 10 Mos.</b>	<b>4 Yrs. 8 Mos.</b>

\*This average does not include inmates with life, death, YOA sentences and inmates released on paid fine, remanded appeal, court order, pardon, resentenced, or death.

### Time Served by SCDC Inmates Released Fiscal Years 2017 – 2019

TIME SERVED	FY 2017		FY 2018		FY 2019	
	#	%	#	%	#	%
3 Months or Less	659	7.1%	501	5.8%	316	4.2%
3 Months 1 Day-6 Months	1,154	12.4%	882	10.3%	686	9.1%
6 Months 1 Day-9 Months	1,165	12.5%	941	11.0%	890	11.8%
9 Months 1 Day-1 Year	979	10.5%	777	9.1%	804	10.7%
1 Year 1 Day-5 Years	4,125	44.3%	4,214	49.1%	3,740	49.7%
5 Years 1 Day-10 Years	748	8.0%	737	8.6%	601	8.0%
10 Years 1 Day-15 Years	274	2.9%	254	3.0%	256	3.4%
15 Years 1 Day-20 Years	127	1.4%	135	1.6%	121	1.6%
20 Years 1 Day-25 Years	35	0.4%	63	0.7%	53	0.7%
25 Years 1 Day-30 Years	15	0.2%	27	0.3%	22	0.3%
Over 30 Years	24	0.3%	54	0.6%	30	0.4%
<b>TOTAL RELEASES</b>	<b>9,305</b>	<b>100.0%</b>	<b>8,585</b>	<b>100.0%</b>	<b>7,519</b>	<b>100.0%</b>
<b>Average Time Served</b>	<b>2 Years 5 Months</b>		<b>2 Years 8 Months</b>		<b>2 Years 9 Months</b>	

This average does not include inmates with life, death, YOA sentences and inmates released on paid fine, remanded appeal, court order, pardon, resentenced, or death.

### Releases from SCDC by Type Fiscal Years 2017 – 2019

RELEASES	FY 2017		FY 2018		FY 2019	
	#	%	#	%	#	%
EXPIRATION OF SENTENCE/ LESS GOOD TIME	3,919	42.1%	3,067	35.7%	2,518	33.5%
MAXOUT - YOA	96	1.0%	64	0.7%	83	1.1%
PLACED ON PROBATION	1,831	19.7%	1,659	19.3%	1,469	19.5%
PAROLED TO INTENSIVE SUPERVISION SERVICES*	513	5.5%	492	5.7%	513	6.8%
PAROLED BY YOA PAROLE BOARD**	199	2.1%	193	2.2%	135	1.8%
PAROLED BY DPPPS***	820	8.8%	1,219	14.2%	1,196	15.9%
RE-SENTENCED	17	0.2%	7	0.1%	5	0.1%
COMMUNITY SUPERVISION	985	10.6%	957	11.1%	871	11.6%
SUPERVISED RE-ENTRY	812	8.7%	782	9.1%	621	8.3%
DEATH	86	0.9%	114	1.3%	79	1.1%
DEATH-EXECUTED	0	0.0%	0	0.0%	0	0.0%
RELEASED TO EPA	0	0.0%	0	0.0%	0	0.0%
OTHER ****	27	0.3%	31	0.4%	29	0.4%
<b>TOTAL RELEASES</b>	<b>9,305</b>	<b>100.0%</b>	<b>8,585</b>	<b>100.0%</b>	<b>7,519</b>	<b>100.0%</b>

\* Intensive Supervision Administrative Release Authority (ISARA) assumed YOA Parole Board duties on February 1, 2013.  
 \*\* The Youthful Offender Act provides for indeterminate sentences of 1 - 6 years for offenders aged 17 - 25.  
 \*\*\* Department of Probation, Parole, and Pardon Services.  
 \*\*\*\* These releases include court ordered, paid fine, appeal bond, pardon, remanded to county and released on furlough.

### South Carolina Department of Corrections Cost Per Inmate\* Fiscal Years 2015-2019

Fiscal Year	Based on State Funds Spent		Based on All Funds Spent***	
	Annual Cost Per Inmate	Daily Cost Per Inmate	Annual Cost Per Inmate	Daily Cost Per Inmate
2015	\$17,872	\$48.96	\$19,728	\$54.05
2016	\$18,119	\$49.50	\$19,935	\$54.47
2017	\$19,054	\$52.20	\$20,925	\$57.33
2018	\$21,756	\$59.61	\$23,712	\$64.96
2019	\$23,673	\$64.86	\$25,836	\$70.78