

South Carolina Department of Corrections Recidivism Rates of Inmates Released during FY 2012 - FY 2014			
	Year of Release		
	FY 2012	FY 2013	FY 2014
Total Number of Releases	11,409	9,623	9,485
Percentage of Releases who Returned to SCDC:	Recidivism Rate by Year of Release		
	FY 2012	FY 2013	FY 2014
Within One Year or Less	6.2%	6.2%	5.6%
Within Two Years or Less	15.5%	16.2%	15.2%
Within Three Years or Less	22.4%	23.1%	22.7%
Comparison of 3-Year Recidivism Rates by Inmate Attributes			
Attributes	FY 2012	FY 2013	FY 2014
Overall Rate	22.4%	23.1%	22.7%
Gender			
Males	23.3%	24.1%	23.7%
Females	15.2%	15.2%	14.8%
Type of Release			
Maxout (Expiration of Sentence)	17.7%	19.0%	18.7%
Parole	18.3%	17.4%	19.0%
Probation	31.8%	32.2%	34.3%
Community Supervision	14.0%	14.7%	12.0%
Supervised Reentry	n/a	36.1%	27.9%
Youthful Offender Act* - Parole	38.4%	37.7%	30.9%
Youthful Offender Act* - Maxout	23.0%	27.8%	25.0%
Youthful Offender Act* - Intensive Supervision Parole	n/a	22.9%	28.9%
Age at Release			
Under 25 Years	32.0%	31.8%	28.5%
25-30 Years	23.6%	23.1%	23.4%
31-40 Years	19.9%	20.3%	21.9%
Over 40 Years	17.0%	19.8%	19.1%
Program Participation			
Pre-Release	21.6%	20.8%	20.8%
Work Program	17.9%	19.1%	22.6%
Labor Crew	17.8%	19.1%	21.9%
Labor Crew/Work Program	17.8%	19.1%	21.8%
Prison Industry	14.6%	13.5%	12.5%
GED Earned in SCDC Education Program	21.4%	21.7%	21.3%
Sentence Type			
Youthful Offender Act*	36.9%	35.6%	29.7%
Straight-time	20.7%	21.7%	21.9%
Criminal History			
Had Conviction and/or Commitment	24.7%	25.4%	25.6%
Had Commitment	26.4%	27.1%	26.8%
No Known Priors	18.6%	19.4%	18.0%
Mental Health Classification at time of release			
Mentally Ill	26.4%	25.9%	25.8%
Non-Mentally Ill	21.9%	22.8%	22.3%

* Youthful Offender Act (YOA) inmates serve an indeterminate sentence of 1 to 6 years. "Intensive Supervision Parole" releases began in FY13; this parole program includes "first time" youthful offenders who undergo intensive programs/oversight while institutionalized and while on parole supervision.

South Carolina Department of Corrections Profile of Inmates in Institutional Count (Including Inmates on Authorized Absence) as of June 30, 2017			
Characteristics	Male Population	Female Population	Total Population
TOTAL Inmates Population	18,538	1,451	19,989
Current Age			
Average Current Age	38.2	37.4	38.1
21 & Under	846 (5%)	44 (3%)	890 (4%)
22-25	1,952 (11%)	142 (10%)	2,094 (10%)
26-35	6,096 (33%)	536 (37%)	6,632 (33%)
36-55	7,733 (42%)	634 (44%)	8,367 (42%)
56 and Over	1,911 (10%)	95 (7%)	2,006 (10%)
Average Age at Admission	31.9	33.7	32.0
Race			
Black	11,646 (63%)	462 (32%)	12,108 (61%)
White	6,353 (34%)	955 (66%)	7,308 (37%)
Other	539 (3%)	34 (2%)	573 (3%)
Citizenship			
Aliens	432 (2%)	17 (1%)	449 (2%)
Citizens	18,096 (98%)	1,434 (99%)	19,530 (98%)
Sentencing Data/Criminal History			
Admission Type:			
New	15,112 (82%)	1,287 (89%)	16,399 (82%)
Revocator	3,265 (18%)	162 (11%)	3,427 (17%)
Other	161 (1%)	2 (0%)	163 (1%)
With Current Violent Offense	12,916 (70%)	678 (47%)	13,594 (68%)
With Prior Criminal History	11,095 (60%)	605 (42%)	11,700 (59%)
With Prior Commitments	8,061 (43%)	401 (28%)	8,462 (42%)
Average Sentence Length in Years 1	14.8	9.6	14.4
Average Time to Serve before Maxout 2	6.5	4.0	6.3
Sentences One Year or Less (excl. YOA)	422 (2%)	75 (5%)	497 (2%)
Sentences More than 20 years (excl.lifers)	3,494 (19%)	153 (11%)	3,647 (18%)
With Life Sentence	2,075 (11%)	77 (5%)	2,152 (11%)
With YOA/Juvenile Sentence	614 (3%)	47 (3%)	661 (3%)
On Death Row	37 (0%)	0 (0%)	37 (0%)
Non-Parolable (includes TIS inmates)	10,570 (57%)	544 (37%)	11,114 (56%)
TIS Sentences	10,331 (56%)	542 (37%)	10,873 (54%)
Special Needs			
With Children 3	12,212 (66%)	1,160 (80%)	13,372 (67%)
With Convicted Disciplinary in Last 12 Months	6,508 (35%)	387 (27%)	6,895 (34%)
With Victim Witness Indicator	12,553 (68%)	808 (56%)	13,361 (67%)
Sex Registry	3,213 (17%)	44 (3%)	3,257 (16%)
Required DNA Testing	18,221 (98%)	1,373 (95%)	19,594 (98%)
Chemical Dependent per SASSI/TCUDDS 4	6,173 (33%)	753 (52%)	6,926 (35%)
Education/Work			
Average Education Level at Intake	10.6	11.0	10.6
Without HS/GED	9,463 (51%)	625 (43%)	10,088 (50%)
Leading Most Serious Offense 5			
	Homicide 20%	Dang. Drugs 21%	Homicide 20%
	Dang. Drugs 15%	Homicide 20%	Dang. Drugs 16%
	Burglary 14%	Larceny 9%	Burglary 14%
	Robbery 13%	Burglary 8%	Robbery 13%
	Sexual Assault 9%	Robbery 8%	Sexual Assault 8%
Top Five Committing Counties			
	Greenville 10%	Spartanburg 14%	Greenville 10%
	Spartanburg 9%	Greenville 11%	Spartanburg 10%
	Richland 8%	Horry 7%	Richland 8%
	Charleston 8%	York 6%	Charleston 8%
	Horry 6%	Lexington 6%	Horry 6%
Mental Health Classification			
No Mental Health Problem	15,332 (83%)	662 (46%)	15,994 (80%)
Developmentally Disabled	18 (0%)	1 (0%)	19 (0%)
Mentally Ill	2,650 (14%)	709 (49%)	3,359 (17%)
Not Available/Unknown	538 (3%)	79 (5%)	617 (3%)

¹ Excludes Lifers, Death-Row & YOA's

² Include inmates to be released to Community Supervision under Truth-in-Sentencing, excludes Lifers, Death-Row and YOA's

³ Based on inmate self-reported information at intake

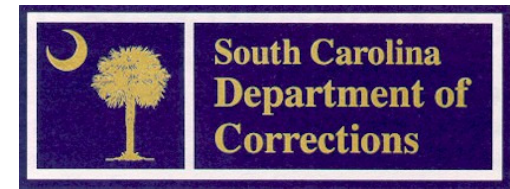
⁴ Substance Abuse Subtle Screening Inventory (SASSI) stopped being used in January 1997. Currently Texas Christian University Drug Dependency Screen (TCUDDS) is used.

⁵

To facilitate statistical reporting, SCDC determines a single "most serious offense" (MSO) for each inmate. Before August 2005, the offense with the longest sentence determined MSO. Effective August 2005, inmates' MSO is the offense with the highest severity level (i.e. offenses are classified between severity level 1 and 5, with 5 as the most severe). In cases where an inmate has multiple offenses at the same severity level, SCDC considers the category of each offense, where homicide offenses take precedence, followed by sex offenses and violent offenses. If multiple offenses exist within the same category, the offense with the longest sentence then determines MSO. Because of this definitional change, post-2005 MSO data cannot be compared to pre-2005 MSO data.

THE SOUTH CAROLINA DEPARTMENT OF CORRECTIONS

BRYAN P. STIRLING
DIRECTOR



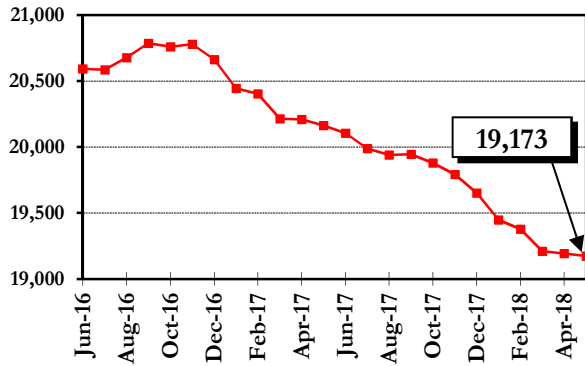
SCDC FAQs JUNE 2018

For further information, contact:
South Carolina Department of Corrections
Resource and Information Management
4444 Broad River Road
Columbia, SC 29210
(803) 896-8526

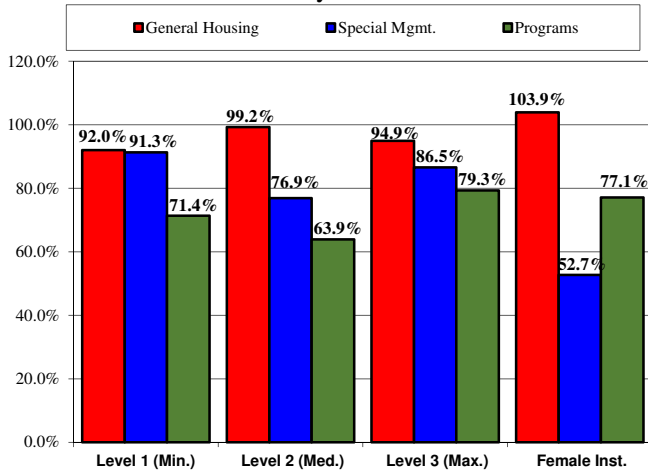
This document is available in alternative formats by contacting the number above.

This report contains preliminary statistics. Changes/updates will be posted on the SCDC website www.doc.sc.gov.

SCDC Average Daily Facility Count per Month June 2016 – May 2018



Bedspace Utilization Rates by Housing Type May 15, 2018



Average Daily Inmate Population Fiscal Year 2010 - 2017					
Fiscal Year	SCDC Facilities	Other ¹	SCDC Jurisdiction	Change over Last Year	% Change over Last Year
2010	24,040	670	24,710	-24	-0.1%
2011	23,293	646	23,939	-771	-3.1%
2012	22,711	623	23,334	-605	-2.5%
2013	22,088	592	22,680	-654	-2.8%
2014	21,712	603	22,315	-365	-1.6%
2015	21,183	590	21,773	-542	-2.4%
2016	20,671	623	21,294	-479	-2.2%
2017	20,483	652	21,135	-159	-0.7%

Admissions to SCDC Fiscal Years 2015 - 2017

ADMISSIONS	FY 2015		FY 2016		FY 2017	
	#	%	#	%	#	%
NEW ADMISSIONS FROM COURT	7,026	81.20%	7,112	80.84%	6,999	80.8%
Indeterminate Sentence (YOA)*	554	6.40%	582	6.62%	630	6.6%
Straight Sentence (Non-YOA)	6,459	74.60%	6,493	73.80%	6,317	73.8%
Other Jurisdiction	13	0.20%	37	0.42%	52	0.4%
PROBATION REVOCATIONS***	1,029	11.90%	1,088	12.37%	854	12.4%
PAROLE REVOCATIONS	357	4.10%	290	3.30%	221	3.3%
Youthful Offender Act (YOA)	189	2.20%	125	1.42%	64	1.4%
NON-YOA	168	1.90%	165	1.88%	157	1.9%
ISS REVOCATIONS	106	1.20%	154	1.75%	127	1.8%
SUPERVISED RE-ENTRY REVOCATIONS	24	0.30%	36	0.41%	43	0.4%
SF/EPA REVOCATIONS	0	0.00%	0	0.00%	0	0.0%
COMMUNITY SUPV. REVOCATIONS	104	1.20%	113	1.28%	104	1.3%
RE-SENTENCED	8	0.10%	5	0.06%	8	0.1%
DEATH ROW	0	0.00%	0	0.00%	0	0.0%
OTHER**	2	0.00%	0	0.00%	1	0.0%
TOTAL ADMISSIONS	8,656	100.00%	8,798	100.00%	8,357	100.00%

All percentages rounded where possible.
 *The Youthful Offender Act provides for indeterminate sentences of 1- 6 years for offenders aged 17-25.
 ** These inmates include appeal bond denied, ICC, and other state inmates.
 *** Death Row admissions figures represent placements to death row, includes new admissions, resentenced and returned inmates
 **** Includes only those inmates released to probation from SCDC.

Most Serious Offense of SCDC Admissions Fiscal Years 2015 - 2017

OFFENSE CLASSIFICATION	FY 2015	FY 2016	FY 2017
DANGEROUS DRUGS	19.8%	21.1%	21.5%
BURGLARY	15.6%	15.2%	13.8%
LARCENY	9.7%	8.6%	9.0%
ASSAULT	8.5%	8.4%	8.0%
TRAFFIC OFFENSE	6.5%	5.9%	6.0%
ROBBERY	6.0%	5.9%	6.3%
FAMILY OFFENSE	5.5%	6.3%	7.1%
ALL OTHERS	28.3%	28.6%	28.3%
TOTAL ADMISSIONS	8,656	8,798	8,357

* Highlighted areas indicate most common offenses for each fiscal year. Inmates often are committed to SCDC with many offenses, with each carrying a specific sentence, county of commitment, etc. To facilitate statistical reporting, SCDC determines a single "most serious offense" (MSO) for each inmate. Inmates' MSO is the offense with the highest severity level (i.e. offenses are classified between severity level 1 and 5, with 5 as the most severe).

Average Sentence Length of SCDC Admissions Fiscal Years 2015 - 2017

	FY 2015	FY 2016	FY 2017
Average Sentence Length	4 Yrs. 4 Mos.	4 Yrs. 4 Mos.	4 Yrs. 6 Mos.

* This average does not include inmates with life, death, YOA sentences and inmates released on paid fine, remanded appeal, court order, pardon, resentenced, or death.

Time Served by SCDC Inmates Released Fiscal Years 2015 - 2017

TIME SERVED	FY 2015		FY 2016		FY 2017	
	#	%	#	%	#	%
3 Months or Less	794	8.5%	741	8.1%	659	7.1%
3 Months 1 Day-6 Months	1,252	13.4%	1,234	13.5%	1,154	12.4%
6 Months 1 Day-9 Months	1,184	12.7%	1,133	12.4%	1,165	12.5%
9 Months 1 Day-1 Year	897	9.6%	749	8.2%	979	10.5%
1 Year 1 Day-5 Years	3,943	42.2%	3,812	41.7%	4,125	44.3%
5 Years 1 Day-10 Years	819	8.8%	922	10.1%	748	8.0%
10 Years 1 Day-15 Years	267	2.9%	332	3.6%	274	2.9%
15 Years 1 Day-20 Years	110	1.2%	140	1.5%	127	1.4%
20 Years 1 Day-25 Years	42	0.4%	46	0.5%	35	0.4%
25 Years 1 Day-30 Years	23	0.2%	13	0.1%	15	0.2%
Over 30 Years	23	0.25%	25	0.27%	24	0.3%
TOTAL RELEASES	9,354	100.0%	9,147	100.0%	9,305	100.0%
Average Time Served	2 Years 5 Months		2 Years 8 Months		2 Years 5 Months	

This average does not include inmates with life, death, YOA sentences and inmates released on paid fine, remanded appeal, court order, pardon, resentenced, or death.

Releases from SCDC by Type Fiscal Years 2015 - 2017

RELEASES	FY 2015		FY 2016		FY 2017	
	#	%	#	%	#	%
EXPIRATION OF SENTENCE/ LESS GOOD TIME	3,948	42.2%	3,920	42.9%	3,919	42.1%
MAXOUT - YOA	57	0.6%	98	1.1%	96	1.0%
PLACED ON PROBATION	1,983	21.2%	1,895	20.7%	1,831	19.7%
PAROLED TO INTENSIVE SUPERVISION SERVICES*	638	6.8%	552	6.0%	513	5.5%
PAROLED BY YOA PAROLE BOARD**	198	2.1%	180	2.0%	199	2.1%
PAROLED BY DPPPS***	790	8.4%	655	7.2%	820	8.8%
RE-SENTENCED	11	0.1%	15	0.2%	17	0.2%
COMMUNITY SUPERVISION	1,097	11.7%	1,033	11.3%	985	10.6%
SUPERVISED RE-ENTRY	528	5.6%	692	7.6%	812	8.7%
DEATH	72	0.8%	86	0.9%	86	0.9%
DEATH-EXECUTED	0	0.0%	0	0.0%	0	0.0%
RELEASED TO EPA	0	0.0%	0	0.0%	0	0.0%
OTHER****	32	0.3%	21	0.2%	27	0.3%
TOTAL RELEASES	9,354	100.0%	9,147	100.0%	9,305	100.0%

* Intensive Supervision Administrative Release Authority (ISARA) assumed YOA Parole Board duties on February 1.
 ** The Youthful Offender Act provides for indeterminate sentences of 1 - 6 years for offenders aged 17 - 25.
 *** Department of Probation, Parole, and Pardo

South Carolina Department of Corrections Cost Per Inmate* Fiscal Years 2012-2017				
Fiscal Year	Based on State Funds Spent		Based on All Funds Spent***	
	Annual Cost Per Inmate	Daily Cost Per Inmate	Annual Cost Per Inmate	Daily Cost Per Inmate
2012	\$15,316	\$41.85	\$17,343	\$47.38
2013	\$16,542	\$45.32	\$18,299	\$50.13
2014	\$17,357	\$47.55	\$19,137	\$52.43
2015	\$17,872	\$48.96	\$19,728	\$54.05
2016	\$18,119	\$49.50	\$19,935	\$54.47
2017	\$19,054	\$52.20	\$20,925	\$57.33

* Calculation of the SCDC per inmate costs is based on the average number of inmates in SCDC facilities and a small number of authorized absences and does not include state inmates held in designated facilities, institutional diversionary programs, or other non-SCDC locations.