

South Carolina Department of Corrections Recidivism Rates of Inmates Released during FY2007 - FY2009			
	Year of Release		
	FY 2007	FY 2008	FY 2009
Total Number of Releases	13,499	12,807	13,454
Percentage of Releasees who Returned to SCDC:	Recidivism Rate by Year of Release		
	FY 2007	FY 2008	FY 2009
Within One Year or Less	13.1%	12.3%	11.9%
Within Two Years or Less	25.7%	24.0%	22.8%
Within Three Years or Less	33.5%	30.6%	29.4%

Comparison of 3-Year Recidivism Rates by Inmate Attributes			
Attributes	FY 2007	FY 2008	FY 2009
Overall Rate	33.5%	30.6%	29.4%
Gender			
Males	35.1%	32.2%	30.7%
Females	20.9%	18.5%	20.0%
Type of Release			
Maxout (Expiration of Sentence)	25.6%	22.2%	20.8%
Parole	26.3%	25.2%	21.9%
Probation	43.5%	41.5%	43.2%
Community Supervision	32.3%	24.9%	21.6%
Youthful Offender Act* - Parole	54.1%	52.8%	50.0%
Youthful Offender Act* - Maxout	40.4%	29.7%	37.2%
Age at Release			
Under 25 Years	44.9%	43.2%	41.1%
25-30 Years	31.0%	29.2%	28.3%
31-40 Years	32.1%	28.2%	25.9%
Over 40 Years	27.2%	23.3%	23.5%
Program Participation			
Pre-Release	29.7%	25.0%	25.7%
Work Program	24.8%	23.4%	22.9%
Labor Crew	25.4%	23.3%	23.1%
Labor Crew/Work Program	25.4%	23.3%	23.2%
Prison Industry	26.4%	23.4%	19.7%
Sentence Type			
Youthful Offender Act*	52.7%	50.6%	49.0%
Straight-time	30.7%	27.5%	26.4%
Criminal History **			
Had Conviction and/or Commitment	36.7%	32.9%	31.4%
Had Commitment	38.2%	34.6%	32.9%
No Known Priors	27.2%	26.4%	25.7%

* Youthful Offender Act (YOA) inmates serve an indeterminate sentence of 1 to 6 years.

** Prior to FY05, all priors data based on manual entry of prior SCDC commitments and data entry of "all convictions" and

South Carolina Department of Corrections Profile of Inmates in Institutional Count (Including Inmates on Authorized Absence) as of June 30, 2012			
Characteristics	Male Population	Female Population	Total Population
TOTAL Inmates Population	20,826	1,335	22,161
	%	%	%
Current Age			
Average Current Age	36.3	37.7	36.4
21 & Under	7%	3%	7%
22-25	13%	9%	13%
26-35	34%	33%	34%
36-55	39%	50%	40%
56 and Over	7%	5%	7%
Average Age at Admission	31.1	34.0	31.3
Race			
Black	66%	43%	65%
White	31%	55%	33%
Other	3%	2%	3%
Citizenship			
Illegal Aliens		1%	2%
Citizens		99%	98%
Sentencing Data/Criminal History			
Admission Type:			
New	79%	87%	79%
Revocator	20%	13%	20%
Other	1%	0.2%	1%
With Current Violent Offense	63%	46%	62%
With Prior Criminal History	63%	47%	62%
With Prior Commitments	45%	30%	44%
Average Sentence Length in Years ¹	13.9	9.4	13.6
Average Time to Serve before Maxout ²	5.9	4.0	5.7
Sentences One Year or Less (excl. YOA)	3%	9%	3%
Sentences More than 20 years (excl. lifers)	15%	10%	14%
With Life Sentence	10%	6%	10%
With YOA/Juvenile Sentence	4%	2%	4%
On Death Row	0.2%	0%	0.2%
Non-Parolable (includes TIS inmates)	53%	39%	52%
TIS Sentences (Truth-In-Sentencing)	51%	39%	51%
Special Needs			
With Children ³	65%	79%	65%
With Convicted Disciplinaries in Last 12 Months	35%	24%	35%
With Victim Witness Indicator	58%	50%	58%
Sex Registry	16%	3%	15%
Required DNA Testing	98%	93%	98%
Chemical Dependent per SASSI/TCUDDS ⁴	39%	54%	40%
Education/Work			
Average Education Level at Intake	10.5	10.9	10.5
Without HS/GED	56%	46%	56%
Leading Most Serious Offense⁵			
Dang. Drugs 18%	Homicide 19%	Dang. Drugs 17%	
Homicide 16%	Dang. Drugs 15%	Homicide 16%	
Burglary 16%	Burglary 9%	Burglary 15%	
Robbery 14%	Larceny 8%	Robbery 14%	
Assault 8%	Robbery 8%	Assault 8%	
Top Five Committing Counties			
Greenville 9%	Greenville 11%	Greenville 9%	
Richland 9%	Spartanburg 11%	Spartanburg 9%	
Spartanburg 9%	Horry 9%	Richland 9%	
Charleston 7%	Richland 6%	Charleston 7%	
York 6%	Lexington 6%	York 6%	
Mental Health Classification:			
No Mental Health Problem	87%	67%	86%
Mentally Retarded	0.1%	0.2%	0.1%
Mentally Ill	12%	30%	13%
Not Available/Unknown	0.6%	2.2%	0.7%

¹ Excludes Lifers, Death-Row & YOAs

² Include inmates to be released to Community Supervision under Truth-in-Sentencing, excludes Lifers, Death-Row and

³ Based on inmate self-reported information at intake

⁴ Substance Abuse Subtle Screening Inventory (SASSI) stopped being used in January 1997. Currently Texas Christian

⁵ To facilitate statistical reporting, SCDC determines a single "most serious offense" (MSO) for each inmate as the offense

THE SOUTH CAROLINA DEPARTMENT OF CORRECTIONS

WILLIAM R. BYARS, JR.
DIRECTOR



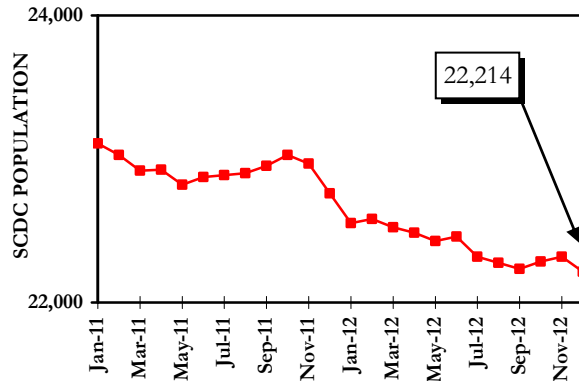
SCDC FAQs JANUARY 2013

For further information, contact:
South Carolina Department of Corrections
Resource and Information Management
4444 Broad River Road
Columbia, SC 29210
(803) 896-8526

This document is available in alternative formats by contacting the number above.

This report contains preliminary statistics.
Changes/updates will be posted on the SCDC website
www.doc.sc.gov.

SCDC Average Daily Facility Count per Month January 2011 – December 2012



SCDC Count and Capacity as of December 15th 2012

	Operating Cap.	Physical Count	% of Capacity
Minimum Security	3,305	2,687	81.3%
Medium Security	10,126	9,789	96.7%
Maximum Security	8,785	8,406	95.7%
Female Institutions	1,814	1,363	75.1%
Agency Total	24,030	22,245	92.6%

Average Daily Inmate Population Fiscal Year 2006 - 2012					
Fiscal Year	SCDC Facilities	Other ¹	SCDC Jurisdiction	Change over Last Year	% Change over Last Year
2006	22,897	789	23,686	-74	-0.3%
2007	23,375	763	24,138	452	1.9%
2008	23,889	748	24,637	499	2.1%
2009	24,017	717	24,734	97	0.4%
2010	24,040	670	24,710	-24	-0.1%
2011	23,293	646	23,939	-771	-3.1%
2012	22,711	623	23,334	-605	-2.5%

¹ Other Placements = Special Placements + Designated Facilities

Admissions to SCDC Fiscal Years 2010 - 2012

ADMISSIONS	FY 2010		FY 2011		FY 2012	
	#	%	#	%	#	%
NEW ADMISSIONS FROM COURT	9,410	74.8%	8,250	75.8%	7,966	78.3%
Indeterminate Sentence (YOA)*	926	7.4%	725	6.7%	646	6.4%
Straight Sentence (Non-YOA)	8,436	67.0%	7,489	68.8%	7,280	71.6%
Other Jurisdiction	48	0.4%	36	0.3%	40	0.4%
PROBATION REVOCATIONS***	1,766	14.0%	1,497	13.7%	1,213	11.9%
PAROLE REVOCATIONS	999	7.9%	835	7.7%	746	7.3%
Youthful Offender Act (YOA)	647	5.1%	510	4.7%	413	4.1%
NON-YOA	352	2.8%	325	3.0%	333	3.3%
SF/EPA REVOCATIONS	30	0.2%	28	0.3%	9	0.1%
COMMUNITY SUPV. REVOCATIONS	269	2.1%	215	2.0%	192	1.9%
RE-SENTENCED	111	0.9%	62	0.6%	41	0.4%
DEATH ROW	1	0.0%	1	0.0%	0	0.0%
OTHER **	0	0.0%	0	0.0%	3	0.0%
TOTAL ADMISSIONS	12,586	100.0%	10,888	100.0%	10,170	100.0%

* The Youthful Offender Act provides for indeterminate sentences of 1 - 6 years for offenders aged 17-21.

** These inmates include appeal bond denied, ICC, and other state inmates.

*** Includes only those inmates released to probation from SCDC.

Most Serious Offense of SCDC Admissions Fiscal Years 2010 - 2012

OFFENSE CLASSIFICATION	FY 2010	FY 2011	FY 2012
DANGEROUS DRUGS	19.5%	18.8%	18.4%
BURGLARY	15.7%	16.0%	16.3%
ASSAULT	10.4%	10.0%	8.9%
LARCENY	6.4%	7.2%	7.8%
TRAFFIC OFFENSE	8.2%	7.5%	7.6%
ROBBERY	6.5%	6.5%	6.5%
FAMILY OFFENSE	4.9%	5.2%	5.1%
ALL OTHERS	28.3%	28.8%	29.4%
TOTAL ADMISSIONS	12,586	10,888	10,170

* Highlighted areas indicate most common offenses for each fiscal year. Inmates often are committed to SCDC with many offenses, with each carrying a specific sentence, county of commitment, etc. To facilitate statistical reporting, SCDC determines a single "most serious offense" (MSO) for each inmate. Inmates' MSO is the offense with the highest severity level (i.e. offenses are classified between severity level 1 and 5, with 5 as the most severe).

Average Sentence Length of SCDC Admissions Fiscal Years 2010 - 2012

	FY 2010	FY 2011	FY 2012
Average Sentence Length	4 Yrs. 2 Mos.	4 Yrs. 2 Mos.	4 Yrs. 0 Mos.

Time Served by SCDC Inmates Released Fiscal Years 2010 - 2012

TIME SERVED	FY 2010		FY 2011		FY 2012	
	#	%	#	%	#	%
3 Months or Less	1,505	11.8%	1,384	11.5%	1,203	10.5%
3 Months 1 Day-6 Months	2,253	17.7%	1,974	16.4%	1,892	16.6%
6 Months 1 Day-9 Months	1,527	12.0%	1,302	10.8%	1,271	11.1%
9 Months 1 Day-1 Year	1,552	12.2%	1,474	12.3%	1,406	12.3%
1 Year 1 Day-5 Years	4,768	37.4%	4,693	39.0%	4,426	38.8%
5 Years 1 Day-10 Years	751	5.9%	788	6.6%	820	7.2%
10 Years 1 Day-15 Years	248	1.9%	285	2.4%	277	2.4%
15 Years 1 Day-20 Years	97	0.8%	87	0.7%	71	0.6%
20 Years 1 Day-25 Years	28	0.2%	22	0.2%	25	0.2%
25 Years 1 Day-30 Years	9	0.1%	10	0.1%	12	0.1%
Over 30 Years	6	0.05%	5	0.04%	6	0.05%
TOTAL RELEASES	12,744	100.0%	12,024	100.0%	11,409	100.0%

Average Time Served	1 Year 11 Months	2 Years 1 Months	2 Years 0 Months
---------------------	------------------	------------------	------------------

This average does not include inmates with life, death, you sentences and inmates released on paid fine, remanded appeal, court order, pardon, resentenced, or death.

Releases from SCDC by Type Fiscal Years 2010 - 2012

RELEASES	FY 2010		FY 2011		FY 2012	
	#	%	#	%	#	%
EXPIRATION OF SENTENCE/ LESS GOOD TIME	6,761	53.1%	6,111	50.8%	5,924	51.9%
MAXOUT - YOA	148	1.2%	125	1.0%	123	1.1%
PLACED ON PROBATION	2,720	21.3%	2,448	20.4%	2,455	21.5%
PAROLED BY YOA PAROLE BOARD	1,458	11.4%	1,387	11.5%	1,049	9.2%
PAROLED BY DPPPS*	447	3.5%	779	6.5%	547	4.8%
RE-SENTENCED	104	0.8%	57	0.5%	32	0.3%
COMMUNITY SUPERVISION	1,014	8.0%	1,026	8.5%	1,192	10.4%
DEATH	63	0.5%	63	0.5%	61	0.5%
DEATH-EXECUTED	0	0.00%	1	0.0%	0	0.0%
OTHER **	29	0.2%	27	0.2%	26	0.2%
TOTAL RELEASES	12,744	100.0%	12,024	100.0%	11,409	100.0%

* Department of Probation, Parole, and Pardon Services.

** These releases include court ordered, paid fine, appeal bond, pardon, remanded to county and released on furlough.

South Carolina Department of Corrections Cost Per Inmate* Fiscal Years 2008-2012				
Fiscal Year	Based on State Funds Spent		Based on All Funds Spent***	
	Annual Cost Per Inmate	Daily Cost Per Inmate	Annual Cost Per Inmate	Daily Cost Per Inmate
2008	\$14,344	\$39.19	\$16,462	\$44.98
2009	\$14,545	\$39.85	\$16,312	\$44.69
2010	\$14,445 **	\$39.58 **	\$15,963	\$43.73
2011	\$14,409 **	\$39.48 **	\$16,406	\$44.95
2012	\$15,316	\$41.85	\$17,343	\$47.38

*Calculation of the SCDC per inmate costs is based on the average number of inmates in SCDC facilities and a small number of authorized absences and does not include state inmates held in designated facilities, institutional diversionary programs, or other non-SCDC locations.

**In FY 2010 and FY 2011 SCDC received \$22,000,000 and \$40,480,008, respectively, from funds distributed to the states via the American Recovery and Reinvestment Act (ARRA) of 2009. These funds are included in the State Fund figures shown above. The FY 2010 cost figures have been revised from previous postings.

***State, Federal and Special Revenues (Excludes Permanent Improvement, Purchases for Resale, Canteen, Prison Industries, Improvement Enterprise Funds, and Interest and Principle Payments)

Based on 365 days per year, except leap year when 366 days are used.

South Carolina Department of Corrections Recidivism Rates of Inmates Released during FY2007 - FY2009			
	Year of Release		
	FY 2007	FY 2008	FY 2009
Total Number of Releases	13,499	12,807	13,454
Percentage of Releasees who Returned to SCDC:	Recidivism Rate by Year of Release		
	FY 2007	FY 2008	FY 2009
Within One Year or Less	13.1%	12.3%	11.9%
Within Two Years or Less	25.7%	24.0%	22.8%
Within Three Years or Less	33.5%	30.6%	29.4%

Comparison of 3-Year Recidivism Rates by Inmate Attributes			
Attributes	FY 2007	FY 2008	FY 2009
Overall Rate	33.5%	30.6%	29.4%
Gender			
Males	35.1%	32.2%	30.7%
Females	20.9%	18.5%	20.0%
Type of Release			
Maxout (Expiration of Sentence)	25.6%	22.2%	20.8%
Parole	26.3%	25.2%	21.9%
Probation	43.5%	41.5%	43.2%
Community Supervision	32.3%	24.9%	21.6%
Youthful Offender Act* - Parole	54.1%	52.8%	50.0%
Youthful Offender Act* - Maxout	40.4%	29.7%	37.2%
Age at Release			
Under 25 Years	44.9%	43.2%	41.1%
25-30 Years	31.0%	29.2%	28.3%
31-40 Years	32.1%	28.2%	25.9%
Over 40 Years	27.2%	23.3%	23.5%
Program Participation			
Pre-Release	29.7%	25.0%	25.7%
Work Program	24.8%	23.4%	22.9%
Labor Crew	25.4%	23.3%	23.1%
Labor Crew/Work Program	25.4%	23.3%	23.2%
Prison Industry	26.4%	23.4%	19.7%
Sentence Type			
Youthful Offender Act*	52.7%	50.6%	49.0%
Straight-time	30.7%	27.5%	26.4%
Criminal History **			
Had Conviction and/or Commitment	36.7%	32.9%	31.4%
Had Commitment	38.2%	34.6%	32.9%
No Known Priors	27.2%	26.4%	25.7%

* Youthful Offender Act (YOA) inmates serve an indeterminate sentence of 1 to 6 years.

** Prior to FY05, all priors data based on manual entry of prior SCDC commitments and data entry of "all convictions" and

South Carolina Department of Corrections Profile of Inmates in Institutional Count (Including Inmates on Authorized Absence) as of June 30, 2012			
Characteristics	Male Population	Female Population	Total Population
TOTAL Inmates Population	20,826	1,335	22,161
	%	%	%
Current Age			
Average Current Age	36.3	37.7	36.4
21 & Under	7%	3%	7%
22-25	13%	9%	13%
26-35	34%	33%	34%
36-55	39%	50%	40%
56 and Over	7%	5%	7%
Average Age at Admission	31.1	34.0	31.3
Race			
Black	66%	43%	65%
White	31%	55%	33%
Other	3%	2%	3%
Citizenship			
Illegal Aliens		1%	2%
Citizens		99%	98%
Sentencing Data/Criminal History			
Admission Type:			
New	79%	87%	79%
Revocator	20%	13%	20%
Other	1%	0.2%	1%
With Current Violent Offense	63%	46%	62%
With Prior Criminal History	63%	47%	62%
With Prior Commitments	45%	30%	44%
Average Sentence Length in Years ¹	13.9	9.4	13.6
Average Time to Serve before Maxout ²	5.9	4.0	5.7
Sentences One Year or Less (excl. YOA)	3%	9%	3%
Sentences More than 20 years (excl. lifers)	15%	10%	14%
With Life Sentence	10%	6%	10%
With YOA/Juvenile Sentence	4%	2%	4%
On Death Row	0.2%	0%	0.2%
Non-Parolable (includes TIS inmates)	53%	39%	52%
TIS Sentences (Truth-In-Sentencing)	51%	39%	51%
Special Needs			
With Children ³	65%	79%	65%
With Convicted Disciplinaries in Last 12 Months	35%	24%	35%
With Victim Witness Indicator	58%	50%	58%
Sex Registry	16%	3%	15%
Required DNA Testing	98%	93%	98%
Chemical Dependent per SASSI/TCUDDS ⁴	39%	54%	40%
Education/Work			
Average Education Level at Intake	10.5	10.9	10.5
Without HS/GED	56%	46%	56%
Leading Most Serious Offense⁵			
Dang. Drugs 18%	Homicide 19%	Dang. Drugs 17%	
Homicide 16%	Dang. Drugs 15%	Homicide 16%	
Burglary 16%	Burglary 9%	Burglary 15%	
Robbery 14%	Larceny 8%	Robbery 14%	
Assault 8%	Robbery 8%	Assault 8%	
Top Five Committing Counties			
Greenville 9%	Greenville 11%	Greenville 9%	
Richland 9%	Spartanburg 11%	Spartanburg 9%	
Spartanburg 9%	Horry 9%	Richland 9%	
Charleston 7%	Richland 6%	Charleston 7%	
York 6%	Lexington 6%	York 6%	
Mental Health Classification:			
No Mental Health Problem	87%	67%	86%
Mentally Retarded	0.1%	0.2%	0.1%
Mentally Ill	12%	30%	13%
Not Available/Unknown	0.6%	2.2%	0.7%

¹ Excludes Lifers, Death-Row & YOAs

² Include inmates to be released to Community Supervision under Truth-in-Sentencing, excludes Lifers, Death-Row and

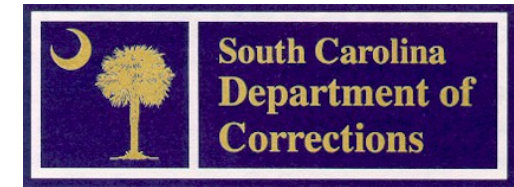
³ Based on inmate self-reported information at intake

⁴ Substance Abuse Subtle Screening Inventory (SASSI) stopped being used in January 1997. Currently Texas Christian

⁵ To facilitate statistical reporting, SCDC determines a single "most serious offense" (MSO) for each inmate as the offense

THE SOUTH CAROLINA DEPARTMENT OF CORRECTIONS

WILLIAM R. BYARS, JR.
DIRECTOR



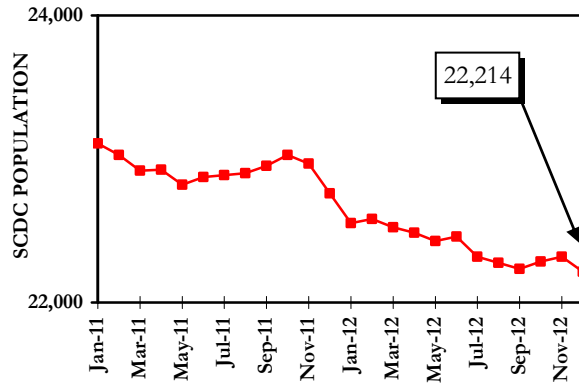
SCDC FAQs JANUARY 2013

For further information, contact:
South Carolina Department of Corrections
Resource and Information Management
4444 Broad River Road
Columbia, SC 29210
(803) 896-8526

This document is available in alternative formats by contacting the number above.

This report contains preliminary statistics.
Changes/updates will be posted on the SCDC website
www.doc.sc.gov.

SCDC Average Daily Facility Count per Month January 2011 – December 2012



SCDC Count and Capacity as of December 15th 2012

	Operating Cap.	Physical Count	% of Capacity
Minimum Security	3,305	2,687	81.3%
Medium Security	10,126	9,789	96.7%
Maximum Security	8,785	8,406	95.7%
Female Institutions	1,814	1,363	75.1%
Agency Total	24,030	22,245	92.6%

Average Daily Inmate Population Fiscal Year 2006 - 2012					
Fiscal Year	SCDC Facilities	Other ¹	SCDC Jurisdiction	Change over Last Year	% Change over Last Year
2006	22,897	789	23,686	-74	-0.3%
2007	23,375	763	24,138	452	1.9%
2008	23,889	748	24,637	499	2.1%
2009	24,017	717	24,734	97	0.4%
2010	24,040	670	24,710	-24	-0.1%
2011	23,293	646	23,939	-771	-3.1%
2012	22,711	623	23,334	-605	-2.5%

¹ Other Placements = Special Placements + Designated Facilities

Admissions to SCDC Fiscal Years 2010 - 2012

ADMISSIONS	FY 2010		FY 2011		FY 2012	
	#	%	#	%	#	%
NEW ADMISSIONS FROM COURT	9,410	74.8%	8,250	75.8%	7,966	78.3%
Indeterminate Sentence (YOA)*	926	7.4%	725	6.7%	646	6.4%
Straight Sentence (Non-YOA)	8,436	67.0%	7,489	68.8%	7,280	71.6%
Other Jurisdiction	48	0.4%	36	0.3%	40	0.4%
PROBATION REVOCATIONS***	1,766	14.0%	1,497	13.7%	1,213	11.9%
PAROLE REVOCATIONS	999	7.9%	835	7.7%	746	7.3%
Youthful Offender Act (YOA)	647	5.1%	510	4.7%	413	4.1%
NON-YOA	352	2.8%	325	3.0%	333	3.3%
SF/EPA REVOCATIONS	30	0.2%	28	0.3%	9	0.1%
COMMUNITY SUPV. REVOCATIONS	269	2.1%	215	2.0%	192	1.9%
RE-SENTENCED	111	0.9%	62	0.6%	41	0.4%
DEATH ROW	1	0.0%	1	0.0%	0	0.0%
OTHER **	0	0.0%	0	0.0%	3	0.0%
TOTAL ADMISSIONS	12,586	100.0%	10,888	100.0%	10,170	100.0%

* The Youthful Offender Act provides for indeterminate sentences of 1 - 6 years for offenders aged 17-21.

** These inmates include appeal bond denied, ICC, and other state inmates.

*** Includes only those inmates released to probation from SCDC.

Most Serious Offense of SCDC Admissions Fiscal Years 2010 - 2012

OFFENSE CLASSIFICATION	FY 2010	FY 2011	FY 2012
DANGEROUS DRUGS	19.5%	18.8%	18.4%
BURGLARY	15.7%	16.0%	16.3%
ASSAULT	10.4%	10.0%	8.9%
LARCENY	6.4%	7.2%	7.8%
TRAFFIC OFFENSE	8.2%	7.5%	7.6%
ROBBERY	6.5%	6.5%	6.5%
FAMILY OFFENSE	4.9%	5.2%	5.1%
ALL OTHERS	28.3%	28.8%	29.4%
TOTAL ADMISSIONS	12,586	10,888	10,170

* Highlighted areas indicate most common offenses for each fiscal year. Inmates often are committed to SCDC with many offenses, with each carrying a specific sentence, county of commitment, etc. To facilitate statistical reporting, SCDC determines a single "most serious offense" (MSO) for each inmate. Inmates' MSO is the offense with the highest severity level (i.e. offenses are classified between severity level 1 and 5, with 5 as the most severe).

Average Sentence Length of SCDC Admissions Fiscal Years 2010 - 2012

	FY 2010	FY 2011	FY 2012
Average Sentence Length	4 Yrs. 2 Mos.	4 Yrs. 2 Mos.	4 Yrs. 0 Mos.

Time Served by SCDC Inmates Released Fiscal Years 2010 - 2012

TIME SERVED	FY 2010		FY 2011		FY 2012	
	#	%	#	%	#	%
3 Months or Less	1,505	11.8%	1,384	11.5%	1,203	10.5%
3 Months 1 Day-6 Months	2,253	17.7%	1,974	16.4%	1,892	16.6%
6 Months 1 Day-9 Months	1,527	12.0%	1,302	10.8%	1,271	11.1%
9 Months 1 Day-1 Year	1,552	12.2%	1,474	12.3%	1,406	12.3%
1 Year 1 Day-5 Years	4,768	37.4%	4,693	39.0%	4,426	38.8%
5 Years 1 Day-10 Years	751	5.9%	788	6.6%	820	7.2%
10 Years 1 Day-15 Years	248	1.9%	285	2.4%	277	2.4%
15 Years 1 Day-20 Years	97	0.8%	87	0.7%	71	0.6%
20 Years 1 Day-25 Years	28	0.2%	22	0.2%	25	0.2%
25 Years 1 Day-30 Years	9	0.1%	10	0.1%	12	0.1%
Over 30 Years	6	0.05%	5	0.04%	6	0.05%
TOTAL RELEASES	12,744	100.0%	12,024	100.0%	11,409	100.0%

Average Time Served	1 Year 11 Months	2 Years 1 Months	2 Years 0 Months
---------------------	------------------	------------------	------------------

This average does not include inmates with life, death, you sentences and inmates released on paid fine, remanded appeal, court order, pardon, resentenced, or death.

Releases from SCDC by Type Fiscal Years 2010 - 2012

RELEASES	FY 2010		FY 2011		FY 2012	
	#	%	#	%	#	%
EXPIRATION OF SENTENCE/ LESS GOOD TIME	6,761	53.1%	6,111	50.8%	5,924	51.9%
MAXOUT - YOA	148	1.2%	125	1.0%	123	1.1%
PLACED ON PROBATION	2,720	21.3%	2,448	20.4%	2,455	21.5%
PAROLED BY YOA PAROLE BOARD	1,458	11.4%	1,387	11.5%	1,049	9.2%
PAROLED BY DPPPS*	447	3.5%	779	6.5%	547	4.8%
RE-SENTENCED	104	0.8%	57	0.5%	32	0.3%
COMMUNITY SUPERVISION	1,014	8.0%	1,026	8.5%	1,192	10.4%
DEATH	63	0.5%	63	0.5%	61	0.5%
DEATH-EXECUTED	0	0.00%	1	0.0%	0	0.0%
OTHER **	29	0.2%	27	0.2%	26	0.2%
TOTAL RELEASES	12,744	100.0%	12,024	100.0%	11,409	100.0%

* Department of Probation, Parole, and Pardon Services.

** These releases include court ordered, paid fine, appeal bond, pardon, remanded to county and released on furlough.

South Carolina Department of Corrections Cost Per Inmate* Fiscal Years 2008-2012				
Fiscal Year	Based on State Funds Spent		Based on All Funds Spent***	
	Annual Cost Per Inmate	Daily Cost Per Inmate	Annual Cost Per Inmate	Daily Cost Per Inmate
2008	\$14,344	\$39.19	\$16,462	\$44.98
2009	\$14,545	\$39.85	\$16,312	\$44.69
2010	\$14,445 **	\$39.58 **	\$15,963	\$43.73
2011	\$14,409 **	\$39.48 **	\$16,406	\$44.95
2012	\$15,316	\$41.85	\$17,343	\$47.38

*Calculation of the SCDC per inmate costs is based on the average number of inmates in SCDC facilities and a small number of authorized absences and does not include state inmates held in designated facilities, institutional diversionary programs, or other non-SCDC locations.

**In FY 2010 and FY 2011 SCDC received \$22,000,000 and \$40,480,008, respectively, from funds distributed to the states via the American Recovery and Reinvestment Act (ARRA) of 2009. These funds are included in the State Fund figures shown above. The FY 2010 cost figures have been revised from previous postings.

***State, Federal and Special Revenues (Excludes Permanent Improvement, Purchases for Resale, Canteen, Prison Industries, Improvement Enterprise Funds, and Interest and Principle Payments)

Based on 365 days per year, except leap year when 366 days are used.