

| South Carolina Department of Corrections<br>Recidivism Rates of Inmates Released during FY2006 - FY2008 |                                    |         |         |
|---|------------------------------------|---------|---------|
|   | Year of Release                    |         |         |
|   | FY 2006                            | FY 2007 | FY 2008 |
| Total Number of Releases  | 13,716                             | 13,499  | 12,807  |
| Percentage of Releases who Returned to SCDC:  | Recidivism Rate by Year of Release |         |         |
|   | FY 2006                            | FY 2007 | FY 2008 |
| Within One Year or Less   | 11.9%                              | 13.1%   | 12.3%   |
| Within Two Years or Less  | 25.6%                              | 25.7%   | 24.0%   |
| Within Three Years or Less  | 33.6%                              | 33.5%   | 30.6%   |
| Comparison of 3-Year Recidivism Rates by Inmate Attributes  |                                    |         |         |
| Attributes  | FY 2006                            | FY 2007 | FY 2008 |
| Overall Rate  | 33.6%                              | 33.5%   | 30.6%   |
| Gender  |                                    |         |         |
| Males   | 35.1%                              | 35.1%   | 32.2%   |
| Females   | 22.3%                              | 20.9%   | 18.5%   |
| Type of Release   |                                    |         |         |
| Maxout (Expiration of Sentence)   | 26.0%                              | 25.6%   | 22.2%   |
| Parole  | 27.9%                              | 26.3%   | 25.2%   |
| Probation   | 43.9%                              | 43.5%   | 41.5%   |
| Community Supervision   | 32.6%                              | 32.3%   | 24.9%   |
| Youthful Offender Act* - Parole   | 52.8%                              | 54.1%   | 52.8%   |
| Youthful Offender Act* - Maxout   | 33.9%                              | 40.4%   | 29.7%   |
| Age at Release  |                                    |         |         |
| Under 25 Years  | 45.1%                              | 44.9%   | 43.2%   |
| 25-30 Years   | 30.8%                              | 31.0%   | 29.2%   |
| 31-40 Years   | 31.7%                              | 32.1%   | 28.2%   |
| Over 40 Years   | 27.2%                              | 27.2%   | 23.3%   |
| Program Participation   |                                    |         |         |
| Pre-Release   | 31.5%                              | 29.7%   | 25.0%   |
| Work Program  | 27.4%                              | 24.8%   | 23.4%   |
| Labor Crew  | 28.8%                              | 25.4%   | 23.3%   |
| Labor Crew/Work Program   | 28.6%                              | 25.4%   | 23.3%   |
| Prison Industry   | 27.2%                              | 26.4%   | 23.4%   |
| Addiction Treatment Unit (ATU)  |                                    | 34.6%   | 36.1%   |
| Shock Incarceration   |                                    | 46.8%   | 45.6%   |
| Sentence Type   |                                    |         |         |
| Youthful Offender Act*  | 51.2%                              | 52.7%   | 50.6%   |
| Straight-time   | 31.2%                              | 30.7%   | 27.5%   |
| Criminal History**  |                                    |         |         |
| Had Conviction and/or Commitment  | 36.4%                              | 36.7%   | 32.9%   |
| Had Commitment  | 38.3%                              | 38.2%   | 34.6%   |
| No Known Priors   | 27.9%                              | 27.2%   | 26.4%   |

\* Youthful Offender Act (YOA) inmates serve an indeterminate sentence of 1 to 6 years.

| South Carolina Department of Corrections<br>Profile of Inmates in Institutional Count<br>(Including Inmates on Authorized Absence) as of June 30, 2011 |                 |                   |                  |
|--|-----------------|-------------------|------------------|
| Characteristics  | Male Population | Female Population | Total Population |
| <b>TOTAL Inmates Population</b>  | <b>21,824</b>   | <b>1,482</b>      | <b>23,306</b>    |
|  | %               | %                 | %                |
| Current Age  |                 |                   |                  |
| Average Current Age  | 35.9            | 37.0              | 36.0             |
| 21 & Under   | 8%              | 4%                | 8%               |
| 22-25  | 13%             | 11%               | 13%              |
| 26-35  | 34%             | 33%               | 34%              |
| 36-55  | 40%             | 48%               | 40%              |
| 56 and Over  | 6%              | 5%                | 6%               |
| Average Age at Admission   | 31.1            | 33.8              | 31.2             |
| Race   |                 |                   |                  |
| Black  | 66%             | 43%               | 65%              |
| White  | 31%             | 55%               | 33%              |
| Other  | 3%              | 2%                | 3%               |
| Citizenship  |                 |                   |                  |
| Illegal Aliens   | 2%              | 1%                | 2%               |
| Citizens   | 98%             | 99%               | 98%              |
| Sentencing Data/Criminal History   |                 |                   |                  |
| <b>Admission Type:</b>   |                 |                   |                  |
| New  | 78%             | 84%               | 78%              |
| Revocator  | 20%             | 15%               | 20%              |
| Other  | 1%              | 0.2%              | 1%               |
| With Current Violent Offense   | 60%             | 40%               | 59%              |
| With Prior Criminal History  | 65%             | 47%               | 64%              |
| With Prior Commitments   | 45%             | 30%               | 44%              |
| Average Sentence Length in Years <sup>1</sup>  | 13.2            | 8.4               | 12.9             |
| Average Time to Serve before Maxout <sup>2</sup>   | 5.7             | 3.6               | 5.5              |
| Sentences One Year or Less (excl. YOA)   | 4%              | 10%               | 4%               |
| Sentences More than 20 years (excl.lifers)   | 14%             | 8%                | 13%              |
| With Life Sentence   | 10%             | 6%                | 9%               |
| With YOA/Juvenile Sentence   | 5%              | 3%                | 5%               |
| On Death Row   | 0.2%            | 0%                | 0.2%             |
| Non-Parolable (includes TIS inmates)   | 51%             | 35%               | 50%              |
| TIS Sentences (Truth-In-Sentencing)  | 50%             | 35%               | 49%              |
| Special Needs  |                 |                   |                  |
| With Children <sup>3</sup>   | 64%             | 79%               | 65%              |
| With Convicted Disciplinary in Last 12 Months  | 34%             | 20%               | 33%              |
| With Victim Witness Indicator  | 55%             | 48%               | 55%              |
| Sex Registry   | 16%             | 3%                | 15%              |
| Required DNA Testing   | 98%             | 91%               | 97%              |
| Chemical Dependent per SASSI/TCUDDS <sup>4</sup>   | 40%             | 52%               | 40%              |
| Education/Work   |                 |                   |                  |
| Average Education Level at Intake  | 10.5            | 10.8              | 10.5             |
| Without HS/GED   | 58%             | 49%               | 57%              |
| Leading Most Serious Offense <sup>5</sup>  |                 |                   |                  |
| Dang. Drugs  | 18%             | 17%               | 18%              |
| Burglary   | 16%             | 16%               | 15%              |
| Homicide   | 15%             | 10%               | 15%              |
| Robbery  | 14%             | 7%                | 13%              |
| Assault  | 9%              | 7%                | 9%               |
| Top Five Committing Counties   |                 |                   |                  |
| Greenville   | 9%              | 12%               | 10%              |
| Richland   | 9%              | 12%               | 9%               |
| Spartanburg  | 9%              | 7%                | 9%               |
| Charleston   | 7%              | 6%                | 7%               |
| York   | 6%              | 6%                | 6%               |
| Mental Health Classification:  |                 |                   |                  |
| No Mental Health Problem   | 87%             | 69%               | 86%              |
| Mentally Retarded  | 0.1%            | 0.3%              | 0.1%             |
| Mentally Ill   | 12%             | 28%               | 13%              |
| Not Available/Unknown  | 0.6%            | 2.0%              | 0.7%             |

<sup>1</sup> Excludes Lifers, Death-Row & YOA's

<sup>2</sup> Include inmates to be released to Community Supervision under Truth-in-Sentencing, excludes Lifers, Death-Row and

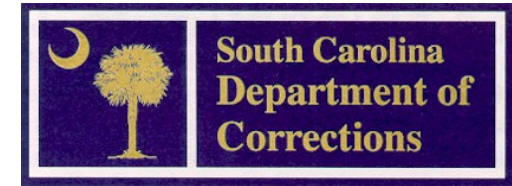
<sup>3</sup> Based on inmate self-reported information at intake

<sup>4</sup> Substance Abuse Subtle Screening Inventory (SASSI) stopped being used in January 1997. Currently Texas Christian

<sup>5</sup> To facilitate statistical reporting, SCDC determines a single "most serious offense" (MSO) for each inmate as the

# THE SOUTH CAROLINA DEPARTMENT OF CORRECTIONS

WILLIAM R. BYARS, JR.  
DIRECTOR



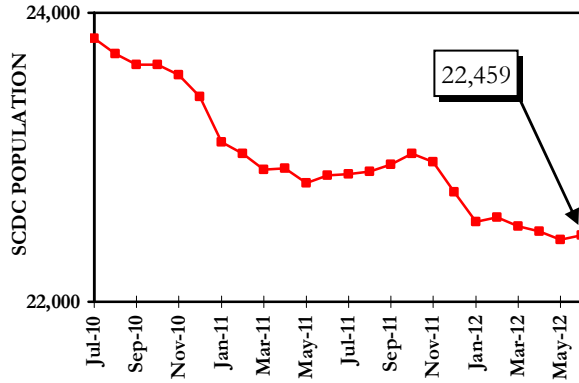
## SCDC FAQs JULY 2012

For further information, contact:  
South Carolina Department of Corrections  
Resource and Information Management  
4444 Broad River Road  
Columbia, SC 29210  
(803) 896-8526

This document is available in alternative formats by  
contacting the number above.

This report contains preliminary statistics.  
Changes/updates will be posted on the SCDC website  
[www.doc.sc.gov](http://www.doc.sc.gov).

## SCDC Average Daily Facility Count per Month July 2010 – June 2012



## SCDC Count and Capacity as of June 15<sup>th</sup> 2012

|                     | Operating Cap. | Physical Count | % of Capacity |
|---------------------|----------------|----------------|---------------|
| Minimum Security    | 3,374          | 2,746          | 81.4%         |
| Medium Security     | 10,114         | 9,938          | 98.3%         |
| Maximum Security    | 8,939          | 8,447          | 94.5%         |
| Female Institutions | 1,780          | 1,381          | 77.6%         |
| <b>Agency Total</b> | <b>24,207</b>  | <b>22,512</b>  | <b>93.0%</b>  |

| Average Daily Inmate Population<br>Fiscal Year 2005 - 2011 |                 |                    |                   |                       |                         |
|--|-----------------|--------------------|-------------------|-----------------------|-------------------------|
| Fiscal Year  | SCDC Facilities | Other <sup>1</sup> | SCDC Jurisdiction | Change over Last Year | % Change over Last Year |
| 2005   | 22,905          | 855                | 23,760            | -265                  | -1.1%                   |
| 2006   | 22,897          | 789                | 23,686            | -74                   | -0.3%                   |
| 2007   | 23,375          | 763                | 24,138            | 452                   | 1.9%                    |
| 2008   | 23,889          | 748                | 24,637            | 499                   | 2.1%                    |
| 2009   | 24,017          | 717                | 24,734            | 97                    | 0.4%                    |
| 2010   | 24,040          | 670                | 24,710            | -24                   | -0.1%                   |
| 2011   | 23,293          | 646                | 23,939            | -771                  | -3.1%                   |

<sup>1</sup> Other Placements = Special Placements + Designated Facilities

## Admissions to SCDC Fiscal Years 2009 - 2011

| ADMISSIONS                         | FY 2009       |               | FY 2010       |               | FY 2011       |               |
|------------------------------------|---------------|---------------|---------------|---------------|---------------|---------------|
|                                    | #             | %             | #             | %             | #             | %             |
| <b>NEW ADMISSIONS FROM COURT</b>   | <b>9,778</b>  | <b>74.1%</b>  | <b>9,410</b>  | <b>74.8%</b>  | <b>8,250</b>  | <b>75.8%</b>  |
| Indeterminate Sentence (YOA)*      | 932           | 7.1%          | 926           | 7.4%          | 725           | 6.7%          |
| Straight Sentence (Non-YOA)        | 8,799         | 66.7%         | 8,436         | 67.0%         | 7,489         | 68.8%         |
| Other Jurisdiction                 | 47            | 0.4%          | 48            | 0.4%          | 36            | 0.3%          |
| <b>PROBATION REVOCATIONS***</b>    | <b>1,856</b>  | <b>14.1%</b>  | <b>1,766</b>  | <b>14.0%</b>  | <b>1,497</b>  | <b>13.7%</b>  |
| <b>PAROLE REVOCATIONS</b>          | <b>1,064</b>  | <b>8.1%</b>   | <b>999</b>    | <b>7.9%</b>   | <b>835</b>    | <b>7.7%</b>   |
| Youthful Offender Act (YOA)        | 706           | 5.3%          | 647           | 5.1%          | 510           | 4.7%          |
| NON-YOA                            | 358           | 2.7%          | 352           | 2.8%          | 325           | 3.0%          |
| <b>SF/EPA REVOCATIONS</b>          | <b>38</b>     | <b>0.3%</b>   | <b>30</b>     | <b>0.2%</b>   | <b>28</b>     | <b>0.3%</b>   |
| <b>COMMUNITY SUPV. REVOCATIONS</b> | <b>285</b>    | <b>2.2%</b>   | <b>269</b>    | <b>2.1%</b>   | <b>215</b>    | <b>2.0%</b>   |
| <b>RE-SENTENCED</b>                | <b>174</b>    | <b>1.3%</b>   | <b>111</b>    | <b>0.9%</b>   | <b>62</b>     | <b>0.6%</b>   |
| <b>DEATH ROW</b>                   | <b>3</b>      | <b>0.0%</b>   | <b>1</b>      | <b>0.0%</b>   | <b>1</b>      | <b>0.0%</b>   |
| <b>OTHER **</b>                    | <b>1</b>      | <b>0.0%</b>   | <b>0</b>      | <b>0.0%</b>   | <b>0</b>      | <b>0.0%</b>   |
| <b>TOTAL ADMISSIONS</b>            | <b>13,199</b> | <b>100.0%</b> | <b>12,586</b> | <b>100.0%</b> | <b>10,888</b> | <b>100.0%</b> |

\* The Youthful Offender Act provides for indeterminate sentences of 1 - 6 years for offenders aged 1

\*\* These inmates include appeal bond denied, ICC, and other state inmates.

\*\*\* Includes only those inmates released to probation from SCDC.

## Most Serious Offense of SCDC Admissions Fiscal Years 2009 - 2011

| OFFENSE CLASSIFICATION  | FY 2009       | FY 2010       | FY 2011       |
|-------------------------|---------------|---------------|---------------|
| DANGEROUS DRUGS         | 19.9%         | 19.5%         | 18.8%         |
| BURGLARY                | 15.4%         | 15.7%         | 16.0%         |
| ASSAULT                 | 10.2%         | 10.4%         | 10.0%         |
| TRAFFIC OFFENSE         | 7.9%          | 8.2%          | 7.5%          |
| ROBBERY                 | 6.2%          | 6.5%          | 6.5%          |
| LARCENY                 | 6.3%          | 6.4%          | 7.2%          |
| FRAUDULENT ACTIVITY     | 5.6%          | 5.2%          | 4.8%          |
| ALL OTHERS              | 28.5%         | 28.1%         | 29.2%         |
| <b>TOTAL ADMISSIONS</b> | <b>13,199</b> | <b>12,586</b> | <b>10,888</b> |

\* Highlighted areas indicate most common offenses for each fiscal year. Inmates often are committed to SCDC with many offenses, with each carrying a specific sentence, county of commitment, etc. To facilitate statistical reporting, SCDC determines a single "most serious offense" (MSO) for each inmate. Inmates' MSO is the offense with the highest severity level (i.e. offenses are classified between severity level 1 and 5, with 5 as the most severe).

## Average Sentence Length of SCDC Admissions Fiscal Years 2009 - 2011

|                                | FY 2009                  | FY 2010                  | FY 2011                  |
|--------------------------------|--------------------------|--------------------------|--------------------------|
| <b>Average Sentence Length</b> | <b>4 Yrs.<br/>1 Mos.</b> | <b>4 Yrs.<br/>2 Mos.</b> | <b>4 Yrs.<br/>2 Mos.</b> |

| TIMESERVED                 | FY 2009                |               | FY 2010                 |               | FY 2011                 |               |
|----------------------------|------------------------|---------------|-------------------------|---------------|-------------------------|---------------|
|                            | #                      | %             | #                       | %             | #                       | %             |
| 3 Months or Less           | 1,601                  | 11.9%         | 1,505                   | 11.8%         | 1,384                   | 11.5%         |
| 3 Months 1 Day-6 Months    | 2,455                  | 18.2%         | 2,253                   | 17.7%         | 1,974                   | 16.4%         |
| 6 Months 1 Day-9 Months    | 1,680                  | 12.5%         | 1,527                   | 12.0%         | 1,302                   | 10.8%         |
| 9 Months 1 Day-1 Year      | 1,743                  | 13.0%         | 1,552                   | 12.2%         | 1,474                   | 12.3%         |
| 1 Year 1 Day-5 Years       | 4,866                  | 36.2%         | 4,768                   | 37.4%         | 4,693                   | 39.0%         |
| 5 Years 1 Day-10 Years     | 766                    | 5.7%          | 751                     | 5.9%          | 788                     | 6.6%          |
| 10 Years 1 Day-15 Years    | 226                    | 1.7%          | 248                     | 1.9%          | 285                     | 2.4%          |
| 15 Years 1 Day-20 Years    | 84                     | 0.6%          | 97                      | 0.8%          | 87                      | 0.7%          |
| 20 Years 1 Day-25 Years    | 16                     | 0.1%          | 28                      | 0.2%          | 22                      | 0.2%          |
| 25 Years 1 Day-30 Years    | 13                     | 0.1%          | 9                       | 0.1%          | 10                      | 0.1%          |
| Over 30 Years              | 4                      | 0.03%         | 6                       | 0.05%         | 5                       | 0.04%         |
| <b>TOTAL RELEASES</b>      | <b>13,454</b>          | <b>100.0%</b> | <b>12,744</b>           | <b>100.0%</b> | <b>12,024</b>           | <b>100.0%</b> |
| <b>Average Time Served</b> | <b>1 Year 9 Months</b> |               | <b>1 Year 11 Months</b> |               | <b>2 Years 0 Months</b> |               |

This average does not include inmates with life, death, yoa sentences and inmates released on paid fine, remanded appeal, court order, pardon, resentenced, or death.

## Releases from SCDC by Type Fiscal Years 2009 - 2011

| RELEASES                               | FY 2009       |               | FY 2010       |               | FY 2011       |               |
|--|---------------|---------------|---------------|---------------|---------------|---------------|
|  | #             | %             | #             | %             | #             | %             |
| EXPIRATION OF SENTENCE/ LESS GOOD TIME | 7,158         | 53.2%         | 6,761         | 53.1%         | 6,111         | 50.8%         |
| MAXOUT - YOA                           | 150           | 1.1%          | 148           | 1.2%          | 125           | 1.0%          |
| PLACED ON PROBATION                    | 2,809         | 20.9%         | 2,720         | 21.3%         | 2,448         | 20.4%         |
| PAROLED BY YOA PAROLE BOARD            | 1,576         | 11.7%         | 1,458         | 11.4%         | 1,387         | 11.5%         |
| PAROLED BY DPPPS*                      | 467           | 3.5%          | 447           | 3.5%          | 779           | 6.5%          |
| RE-SENTENCED                           | 146           | 1.1%          | 104           | 0.8%          | 57            | 0.5%          |
| RELEASED FROM EPA/SF II                | 0             | 0.0%          | 0             | 0.0%          | 0             | 0.0%          |
| COMMUNITY SUPERVISION                  | 1,044         | 7.8%          | 1,014         | 8.0%          | 1,026         | 8.5%          |
| DEATH                                  | 57            | 0.4%          | 63            | 0.5%          | 63            | 0.5%          |
| DEATH-EXECUTED                         | 3             | 0.02%         | 0             | 0.0%          | 1             | 0.0%          |
| OTHER **                               | 44            | 0.3%          | 29            | 0.2%          | 27            | 0.2%          |
| <b>TOTAL RELEASES</b>                  | <b>13,454</b> | <b>100.0%</b> | <b>12,744</b> | <b>100.0%</b> | <b>12,024</b> | <b>100.0%</b> |

\* Department of Probation, Parole, and Pardon Services.

\*\* These releases include court ordered, paid fine, appeal bond, pardon, remanded to county and released on furlough.

| South Carolina Department of Corrections<br>Cost Per Inmate*<br>Fiscal Years 2007-2011 |                            |                       |                             |                       |
|--|----------------------------|-----------------------|-----------------------------|-----------------------|
| Fiscal Year  | Based on State Funds Spent |                       | Based on All Funds Spent*** |                       |
|  | Annual Cost Per Inmate     | Daily Cost Per Inmate | Annual Cost Per Inmate      | Daily Cost Per Inmate |
| 2007   | \$14,093                   | \$38.61               | \$16,432                    | \$45.02               |
| 2008   | \$14,344                   | \$39.19               | \$16,462                    | \$44.98               |
| 2009   | \$14,545                   | \$39.85               | \$16,312                    | \$44.69               |
| 2010   | \$14,445 **                | \$39.58 **            | \$15,963                    | \$43.73               |
| 2011   | \$14,409 **                | \$39.48 **            | \$16,406                    | \$44.95               |

\*Calculation of the SCDC per inmate costs is based on the average number of inmates in SCDC facilities and a small number of authorized absences and does not include state inmates held in designated facilities, institutional diversionary programs, or other non-SCDC locations.

\*\*In FY 2010 and FY 2011 SCDC received \$22,000,000 and \$40,480,008, respectively, from funds distributed to the states via the American Recovery and Reinvestment Act (ARRA) of 2009. These funds are included in the State Fund figures shown above. The FY 2010 cost figures have been revised from previous postings.

\*\*\*State, Federal and Special Revenues (Excludes Permanent Improvement, Purchases for Resale, Canteen, Prison Industries, Improvement Enterprise Funds, and Interest and Principle Payments)

Based on 365 days per year, except leap year when 366 days are used.

## Time Served by SCDC Inmates Released Fiscal Years 2009 - 2011